

LETTER TO THE EDITOR

Open Access

# Leukemic transformation driven by an *ASXL1* mutation after a *JAK2V617F*-positive primary myelofibrosis: clonal evolution and hierarchy revealed by next-generation sequencing

Francisca Ferrer-Marín<sup>1\*</sup>, Beatriz Bellosillo<sup>2</sup>, Luz Martínez-Avilés<sup>2</sup>, Gloria Soler<sup>1</sup>, Pablo Carbonell<sup>3</sup>, Ginés Luengo-Gil<sup>1</sup>, Eva Caparrós<sup>1</sup>, José M Torregrosa<sup>1</sup>, Carlos Besses<sup>4</sup> and Vicente Vicente<sup>1</sup>

## Abstract

We have characterized the molecular changes underlying the transformation of a *JAK2V617F*<sup>+</sup>-myelofibrosis with trisomy 8, into a *JAK2V617F*-negative leukemia. Leukemic clone did not carry *JAK2V617F* mutation, but showed *ASXL1* mutation (R693X). This mutation was identified in a low percentage at diagnosis by next-generation sequencing. Using this technology in serial specimens during the follow-up, we observed a progressive expansion of the *ASXL1*-mutated minor clone, whereas the *JAK2V617F*<sup>+</sup>-clone carrying trisomy 8 decreased. Hematologic progression occurred simultaneously with an *ASXL1*-R693X-negative lung-cancer. This is the first report showing a clear association between the expansion of an *ASXL1*-mutated clone and the leukemic transformation of myelofibrosis.

**Keywords:** Myelofibrosis, *ASXL1*, Gene mutations, Acute myeloid leukemia, Clonality, Next-generation sequencing

## Letters to the editor

It is known that patients with *JAK2V617F*<sup>+</sup> myeloproliferative neoplasms (MPNs) can progress to a *JAK2V617F*<sup>-</sup> acute myeloid leukemia (AML) [1-3]. These two phases of the disease may represent two different clones [1], however, the time-dependent clonal hierarchy is just beginning to be elucidated [4,5].

*ASXL1* is the second most frequently mutated gene after *JAK2* (~34.5%) in myelofibrosis (MF) [6]. *ASXL1* mutations are also found in solid neoplasms and all types of myeloid malignancies [7]. They are associated with aggressive disease [8] but their role in leukemic transformation remains controversial. *ASXL1* mutations correlated with progression to blast-state in myelodysplastic syndromes and chronic myelomonocytic leukaemia [9,10] while in MF, they are detectable in most patients at diagnosis [11], and they are present in chronic- and blast-phases [2] with

the same prevalence [6]. These findings suggest that *ASXL1* mutations play a crucial role in the pathogenesis of MF [6,11] but they do not directly cause a leukemic phenotype [2,6]. We here characterize the molecular changes associated to the leukemic transformation of a patient with primary-MF (PMF) using next-generation sequencing (NGS). By the time of the hematologic progression, the patient also developed a lung adenocarcinoma. The relationship between the clonal hierarchy and phenotype disease over time are discussed.

## Case presentation

A 62-year-old male with 126 pack-year smoking history, cardiomyopathy and chronic-pulmonary disease was referred to our Department in May' 2007 for evaluation of anemia, splenomegaly and fever. Following a peripheral blood (PB) and a bone marrow (BM) examination, a diagnosis of PMF according to WHO criteria was made, IPSS intermediate-2 [12]. Genetic analysis revealed a trisomy 8 in all 18 metaphases analyzed and the *JAK2V617F* mutation. With hydroxyurea, the patient achieved a complete resolution of fever and splenomegaly, and hemoglobin

\* Correspondence: fferrermarin@gmail.com

<sup>1</sup>Hematology and Medical Oncology Unit, Hospital Universitario Morales-Meseguer, Centro Regional de Hemodonación, C/Ronda de Garay, sn. 3003, Murcia, Spain

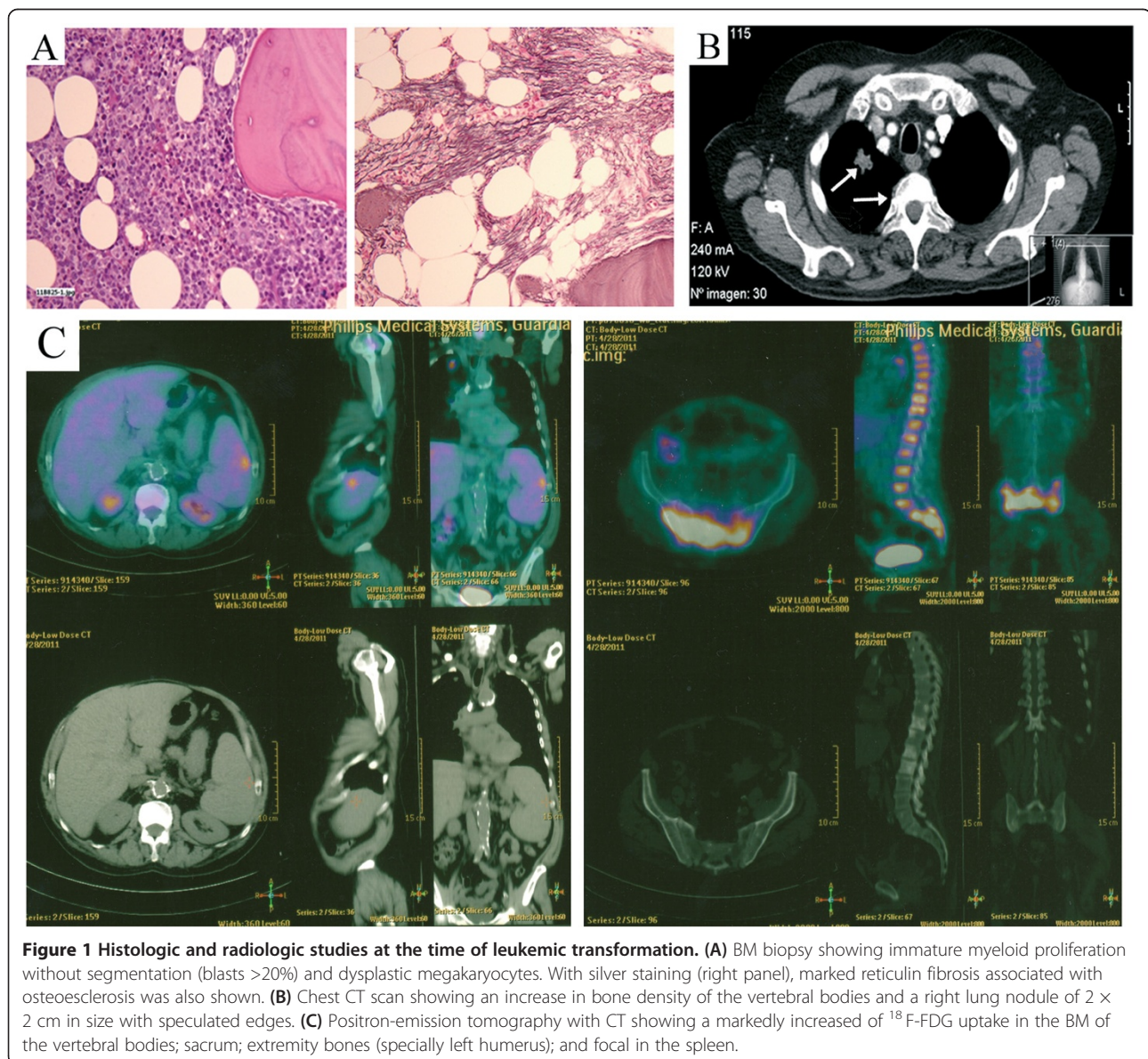
Full list of author information is available at the end of the article

normalization. Thirty months later, he started with lumbar pain and leukocytosis ( $12.9 \times 10^9/L$ ). A new BM biopsy showed severe fibrosis with osteosclerosis. Due to the patient's comorbidities, allogeneic transplant was not possible and hydroxyurea was continued. In December' 2010, the patient developed fever, splenomegaly, marked leukocytosis ( $81.3 \times 10^9/L$ ) and required red-cell transfusions. A new BM biopsy confirmed leukemic transformation (Figure 1A) but fluorescence *in situ* hybridization (FISH) analysis discarded trisomy 8. Hydroxyurea was increased achieving a good control of leukocyte count. Few weeks later, he began with back and thoracic pain. A computed tomography (CT) scan revealed a speculated right lung nodule (Figure 1B). Biopsy confirmed non-small-cell lung cancer (NSCLC) (T1N0MX) and a PET-CT for

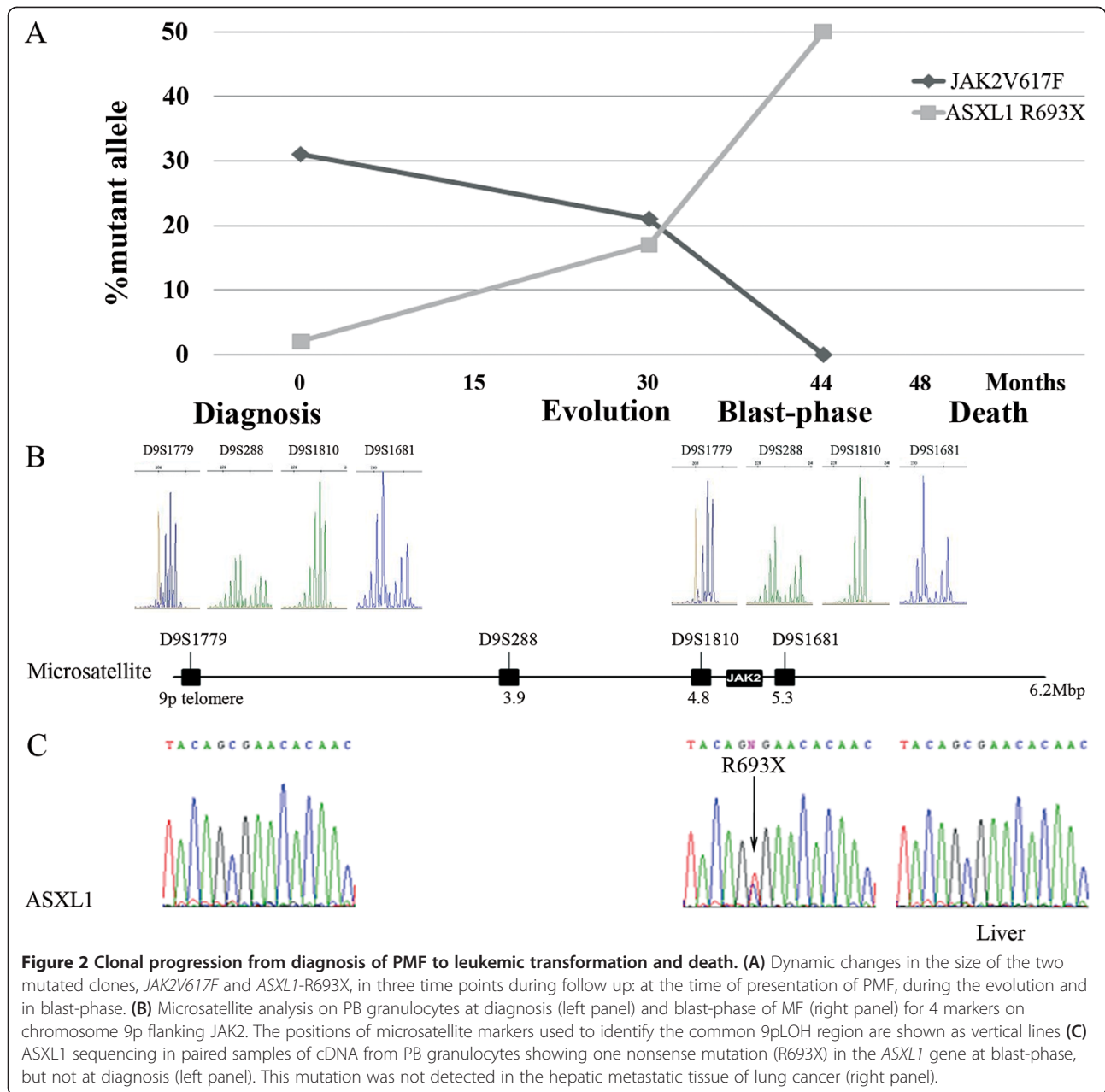
staging was made (Figure 1C). Despite starting treatment for AML with thioguanine, the patient died because of acute congestive heart and liver failure. A post-mortem liver biopsy uncovered metastatic infiltration by NSCLC.

## Discussion

To further investigate the molecular mechanisms underlying neoplastic progression in this case, we performed *JAK2V617F* allele burden in PB granulocytes obtained at three time points, by allele-specific qRT-PCR [13]. *JAK2V617F* allele percentage decreased from 30% at diagnosis to undetectable level at blast-phase with an intermediate value of 20% (Figure 2A). A clonal analysis with microsatellites for 4 markers on chromosome 9p flanking *JAK2*, on PB granulocytes taken at diagnosis



**Figure 1** Histologic and radiologic studies at the time of leukemic transformation. (A) BM biopsy showing immature myeloid proliferation without segmentation (blasts >20%) and dysplastic megakaryocytes. With silver staining (right panel), marked reticulin fibrosis associated with osteosclerosis was also shown. (B) Chest CT scan showing an increase in bone density of the vertebral bodies and a right lung nodule of 2 × 2 cm in size with speculated edges. (C) Positron-emission tomography with CT showing a markedly increased of <sup>18</sup>F-FDG uptake in the BM of the vertebral bodies; sacrum; extremity bones (specially left humerus); and focal in the spleen.



and in the blast-phase, [14] did not show loss of heterozygosity on chromosome 9p (9pLOH), either at diagnosis (*JAK2V617F*<sup>+</sup>-clone) or at blast-stage (dominant *JAK2V617F*<sup>-</sup>-clone) (Figure 2B), suggesting that at presentation, two independent clones were likely present in our patient. To address this question, sequencing of *ASXL1* (exon 12), *TET2* (all exons), *TP53* (exon 4–9), *IDH1* (R132), *IDH2* (R140, R172), *c-CBL* (exons 8–9) by Sanger and *SRSF2* (exon 1), *SF3B1* (exons 14–15) by NGS (454-GS Junior platform) were performed, in the same samples, as described [15,16]. At blast-phase, we identified an *ASXL1*-nonsense mutation (R693X), which was not present at diagnosis either by conventional

sequencing (Figure 2C) or by high resolution melting analysis (not shown). However, by using NGS (sensitivity 1%, [17]) we were able to detect the *ASXL1*-R693X mutation at diagnosis in a very low level (2%). Additionally, using NGS at two time-points during follow-up, we observed an expansion of the *ASXL1*-R693X subclone, with a maximum value of 50% at blast-phase (Figure 2A).

Since *ASXL1* has been involved in epithelial malignancy tumorigenesis [18] and cancer [7], we sequenced *ASXL1* gene in the hepatic metastatic tissue of lung cancer, but *ASXL1*-R693X mutation was not detected (Figure 2C), suggesting that at least three malignant clones might be present.



Overall, in this patient, at early disease, the PMF phenotype was driven mainly by a *JAK2V617F*<sup>+</sup>-dominant clone carrying trisomy 8. During the evolution this clone declined, whereas the *ASXL1*-mutated minor clone expanded, promoting the progression to leukemia. The reasons for these gradual shifts are unknown. Although hydroxyurea may induce a decrease in *JAK2V617F* allele burden in *JAK2V617F*<sup>+</sup>-MPNs [13,19], leukemic transformation in MF can occur without any prior therapy [20]. Furthermore, *ASXL1*-R693X mutation, as other mutations affecting genes with epigenetic role, likely favor the occurrence of secondary genetic events and, in association with other cooperating mutations, promotes blast-crisis [5].

The molecular mechanisms undergoing the myeloid leukemogenesis promoted by *ASXL1* have been recently reported [21], but in MF, the role of *ASXL1* mutations in leukemic transformation is still unclear [2,6,22]. By using NGS, we report, for the first time, an association between expansion of an *ASXL1*-mutated clone and MF progression to AML suggesting that in MF, as in other myeloid malignancies, *ASXL1* mutations play a role in leukemic transformation. Given the prevalence of *ASXL1* mutations in patients with MF, determination of *ASXL1* mutation status in these patients could help in the molecular disease monitoring.

## Consent

Written informed consent was obtained from the next of kin of the patient for publication of this Case report. A copy of the written consent is available for review by the Editor-in-Chief of this journal.

## Competing interests

The authors declare that they have no competing interests.

## Authors' contributions

FFM provided clinical information, directed the study and wrote the manuscript. BB designed experiments, analyzed the sequencing data and contributed to the manuscript. LMA performed the molecular biology studies. GS performed cytogenetic and FISH analysis. PC performed the microsatellite analysis. EC and GLG contributed to perform molecular analysis experiments. JMT carried out acquisition of data's patient. CB and WV supervised the study and were responsible for manuscript review. All authors have reviewed and approved the manuscript.

## Acknowledgments

We thank Dr J Corral for his helpful discussions.

## Author details

<sup>1</sup>Hematology and Medical Oncology Unit, Hospital Universitario Morales-Meseguer, Centro Regional de Hemodonación, C/Ronda de Garay, sn. 3003, Murcia, Spain. <sup>2</sup>Department of Pathology, Hospital del Mar-IMIM, Barcelona, Spain. <sup>3</sup>Molecular Genetics Unit, Hospital Universitario Virgen de la Arrixaca, Murcia, Spain. <sup>4</sup>Department of Hematology, Hospital del Mar-IMIM, Barcelona, Spain.

Received: 1 September 2013 Accepted: 3 September 2013  
Published: 8 September 2013

## References

1. Beer PA, Delhommeau F, LeCouedic JP, Dawson MA, Chen E, Bareford D, Kusec R, McMullin MF, Harrison CN, Vannucchi AM, *et al*: Two routes to leukemic transformation after a *JAK2* mutation-positive myeloproliferative neoplasm. *Blood* 2010, **115**:2891–2900.
2. Abdel-Wahab O, Manshour T, Patel J, Harris K, Yao J, Hedvat C, Heguy A, Bueso-Ramos C, Kantarjian H, Levine RL, Verstovsek S: Genetic analysis of transforming events that convert chronic myeloproliferative neoplasms to leukemias. *Cancer Res* 2010, **70**:447–452.
3. Theoharides A, Boissinot M, Girodon F, Garand R, Teo SS, Lippert E, Talmant P, Tichelli A, Hermouet S, Skoda RC: Leukemic blasts in transformed *JAK2*-V617F-positive myeloproliferative disorders are frequently negative for the *JAK2*-V617F mutation. *Blood* 2007, **110**:375–379.
4. Jager R, Kralovics R: Molecular basis and clonal evolution of myeloproliferative neoplasms. *Haematologica* 2010, **95**:526–529.
5. Vainchenker W, Delhommeau F, Constantinescu SN, Bernard OA: New mutations and pathogenesis of myeloproliferative neoplasms. *Blood* 2011, **118**:1723–1735.
6. Stein BL, Williams DM, O'Keefe C, Rogers O, Ingersoll RG, Spivak JL, Verma A, Maciejewski JP, McDevitt MA, Moliterno AR: Disruption of the *ASXL1* gene is frequent in primary, post-essential thrombocytosis and post-polycythemia vera myelofibrosis, but not essential thrombocytosis or polycythemia vera: analysis of molecular genetics and clinical phenotypes. *Haematologica* 2011, **96**:1462–1469.
7. Abdel-Wahab O, Dey A: The *ASXL*-*BAP1* axis: new factors in myelopoiesis, cancer and epigenetics. *Leukemia* 2013, **27**:10–15.
8. Gelsi-Boyer V, Breccqueville M, Devillier R, Murati A, Mozziconacci MJ, Birnbaum D: Mutations in *ASXL1* are associated with poor prognosis across the spectrum of malignant myeloid diseases. *J Hematol Oncol* 2012, **5**:12.
9. Thol F, Friesen I, Damm F, Yun H, Weissinger EM, Krauter J, Wagner K, Chaturvedi A, Sharma A, Wichmann M, *et al*: Prognostic significance of *ASXL1* mutations in patients with myelodysplastic syndromes. *J Clin Oncol* 2011, **29**:2499–2506.
10. Gelsi-Boyer V, Trouplin V, Roquain J, Adelaide J, Carbuccion N, Esterni B, Finetti P, Murati A, Arnoulet C, Zerazhi H, *et al*: *ASXL1* mutation is associated with poor prognosis and acute transformation in chronic myelomonocytic leukaemia. *Br J Haematol* 2010, **151**:365–375.
11. Ricci C, Spinelli O, Salmoiraghi S, Finazzi G, Carobbio A, Rambaldi A: *ASXL1* mutations in primary and secondary myelofibrosis. *Br J Haematol* 2012, **156**:404–407.
12. Cervantes F, Dupriez B, Pereira A, Passamonti F, Reilly JT, Morra E, Vannucchi AM, Mesa RA, Demory JL, Barosi G, *et al*: New prognostic scoring system for primary myelofibrosis based on a study of the International Working Group for Myelofibrosis Research and Treatment. *Blood* 2009, **113**:2895–2901.
13. Besses C, Alvarez-Larran A, Martinez-Aviles L, Mojal S, Longaron R, Salar A, Florensa L, Serrano S, Bellosillo B: Modulation of *JAK2* V617F allele burden dynamics by hydroxycarbamide in polycythemia vera and essential thrombocythemia patients. *Br J Haematol* 2011, **152**:413–419.
14. Kralovics R, Passamonti F, Buser AS, Teo SS, Tiedt R, Passweg JR, Tichelli A, Cazzola M, Skoda RC: A gain-of-function mutation of *JAK2* in myeloproliferative disorders. *N Engl J Med* 2005, **352**:1779–1790.
15. Martinez-Aviles L, Besses C, Alvarez-Larran A, Torres E, Serrano S, Bellosillo B: *TET2*, *ASXL1*, *IDH1*, *IDH2*, and *c-CBL* genes in *JAK2*- and *MPL*-negative myeloproliferative neoplasms. *Ann Hematol* 2012, **91**:533–541.
16. Martinez-Aviles L, Alvarez-Larran A, Besses C, Navarro G, Torres E, Longaron R, Angona A, Pedro C, Florensa L, Serrano S, Bellosillo B: Clinical significance of clonality assessment in *JAK2*-V617F-negative essential thrombocythemia. *Ann Hematol* 2012, **91**:1555–1562.
17. Pietra D, Brisci A, Rumi E, Boggi S, Elena C, Pietrelli A, Bordoni R, Ferrari M, Passamonti F, De Bellis G, *et al*: Deep sequencing reveals double mutations in cis of *MPL* exon 10 in myeloproliferative neoplasms. *Haematologica* 2011, **96**:607–611.
18. Scotto L, Narayan G, Nandula SV, Arias-Pulido H, Subramaniam S, Schneider A, Kaufmann AM, Wright JD, Pothuri B, Mansukhani M, Murty VV: Identification of copy number gain and overexpressed genes on chromosome arm 20q by an integrative genomic approach in cervical cancer: potential role in progression. *Genes Chromosomes Cancer* 2008, **47**:755–765.
19. Girodon F, Schaeffer C, Cleyrat C, Mounier M, Lafont I, Santos FD, Duval A, Maynadie M, Hermouet S: Frequent reduction or absence of detection of the *JAK2*-mutated clone in *JAK2*-V617F-positive patients within the first years of hydroxyurea therapy. *Haematologica* 2008, **93**:1723–1727.

20. Bjorkholm M, Derolf AR, Hultcrantz M, Kristinsson SY, Ekstrand C, Goldin LR, Andreasson B, Birgegard G, Linder O, Malm C, *et al*: **Treatment-related risk factors for transformation to acute myeloid leukemia and myelodysplastic syndromes in myeloproliferative neoplasms.** *J Clin Oncol* 2011, **29**:2410–2415.
21. Abdel-Wahab O, Adli M, LaFave LM, Gao J, Hricik T, Shih AH, Pandey S, Patel JP, Chung YR, Koche R, *et al*: **ASXL1 mutations promote myeloid transformation through loss of PRC2-mediated gene repression.** *Cancer Cell* 2012, **22**:180–193.
22. Vannucchi AM, Lasho TL, Guglielmelli P, Biamonte F, Pardanani A, Pereira A, Finke C, Score J, Gangat N, Mannarelli C, *et al*: **Mutations and prognosis in primary myelofibrosis.** *Leukemia* 2013, **27**:1861–1869.

doi:10.1186/1756-8722-6-68

**Cite this article as:** Ferrer-Marín *et al*: Leukemic transformation driven by an *ASXL1* mutation after a *JAK2V617F*-positive primary myelofibrosis: clonal evolution and hierarchy revealed by next-generation sequencing. *Journal of Hematology & Oncology* 2013 **6**:68.

**Submit your next manuscript to BioMed Central  
and take full advantage of:**

- Convenient online submission
- Thorough peer review
- No space constraints or color figure charges
- Immediate publication on acceptance
- Inclusion in PubMed, CAS, Scopus and Google Scholar
- Research which is freely available for redistribution

Submit your manuscript at  
[www.biomedcentral.com/submit](http://www.biomedcentral.com/submit)

