

RESEARCH

Open Access

# Interferon- $\gamma$ -induced upregulation of immunoproteasome subunit assembly overcomes bortezomib resistance in human hematological cell lines

Denise Niewerth<sup>1</sup>, Gertjan JL Kaspers<sup>1</sup>, Yehuda G Assaraf<sup>2</sup>, Johan van Meerloo<sup>1,5</sup>, Christopher J Kirk<sup>3</sup>, Janet Anderl<sup>3</sup>, Jonathan L Blank<sup>4</sup>, Peter M van de Ven<sup>6</sup>, Sonja Zweegman<sup>5</sup>, Gerrit Jansen<sup>7†</sup> and Jacqueline Cloos<sup>1,5\*†</sup>

## Abstract

**Background:** Despite encouraging results with the proteasome inhibitor bortezomib in the treatment of hematologic malignancies, emergence of resistance can limit its efficacy, hence calling for novel strategies to overcome bortezomib-resistance. We previously showed that bortezomib-resistant human leukemia cell lines expressed significantly lower levels of immunoproteasome at the expense of constitutive proteasomes, which harbored point mutations in exon 2 of the *PSMB5* gene encoding the  $\beta 5$  subunit. Here we investigated whether up-regulation of immunoproteasomes by exposure to interferon- $\gamma$  restores sensitivity to bortezomib in myeloma and leukemia cell lines with acquired resistance to bortezomib.

**Methods:** RPMI-8226 myeloma, THP1 monocytic/macrophage and CCRF-CEM (T) parental cells and sub lines with acquired resistance to bortezomib were exposed to Interferon- $\gamma$  for 24-48 h where after the effects on proteasome subunit expression and activity were measured, next to sensitivity measurements to proteasome inhibitors bortezomib, carfilzomib, and the immunoproteasome selective inhibitor ONX 0914. At last, siRNA knockdown experiments of  $\beta 5i$  and  $\beta 1i$  were performed to identify the contribution of these subunits to sensitivity to proteasome inhibition. Statistical significance of the differences were determined using the Mann-Whitney U test.

**Results:** Interferon- $\gamma$  exposure markedly increased immunoproteasome subunit mRNA to a significantly higher level in bortezomib-resistant cells (up to 30-fold, 10-fold, and 6-fold, in  $\beta 1i$ ,  $\beta 5i$ , and  $\beta 2i$ , respectively) than in parental cells. These increases were paralleled by elevated immunoproteasome protein levels and catalytic activity, as well as HLA class-I. Moreover, interferon- $\gamma$  exposure reinforced sensitization of bortezomib-resistant tumor cells to bortezomib and carfilzomib, but most prominently to ONX 0914, as confirmed by cell growth inhibition studies, proteasome inhibitor-induced apoptosis, activation of PARP cleavage and accumulation of polyubiquitinated proteins. This sensitization was abrogated by siRNA silencing of  $\beta 5i$  but not by  $\beta 1i$  silencing, prior to pulse exposure to interferon- $\gamma$ .

**Conclusion:** Downregulation of  $\beta 5i$  subunit expression is a major determinant in acquisition of bortezomib-resistance and enhancement of its proteasomal assembly after induction by interferon- $\gamma$  facilitates restoration of sensitivity in bortezomib-resistant leukemia cells towards bortezomib and next generation (immuno) proteasome inhibitors.

**Keywords:** Leukemia, Proteasome, Immunoproteasome, Proteasome inhibitor, Bortezomib, Interferon-gamma

\* Correspondence: j.cloos@vumc.nl

†Equal contributors

<sup>1</sup>Department of Pediatric Oncology/Hematology, VU University Medical Center, Amsterdam, The Netherlands

<sup>5</sup>Department of Hematology, VU University Medical Center, Amsterdam, The Netherlands

Full list of author information is available at the end of the article

## Background

Bortezomib is a tight binding yet reversible proteasome inhibitor that is indicated for treatment of newly diagnosed and relapsed multiple myeloma (MM) [1], and is currently being tested in clinical trials for childhood leukemia [2]. In July 2012, the epoxyketone-based proteasome inhibitor carfilzomib [3] was approved in the US for patients with relapsed and refractory MM who received at least two prior therapies (including bortezomib and an immunomodulatory agent) and progressed on or within 60 days of completion of the last therapy [4,5]. Notwithstanding promising initial results, acquired resistance to bortezomib is an emerging factor, which may limit its efficacy in the treatment of hematologic malignancies. The clinical impact of acquired resistance has been demonstrated in poor responses of MM patients who were re-treated with bortezomib [6]. Although bortezomib-retreatment was effective, the response rates as well as the duration of response were decreased as compared to initial therapy, which may point to the development of bortezomib-resistance in (a subgroup of) patients [7]. To investigate possible mechanisms of bortezomib resistance, we previously developed *in vitro* cell line models of hematologic malignancies in which acquired resistance to bortezomib was provoked by chronic exposure to gradually increasing bortezomib concentrations [8,9]. These bortezomib-resistant cell lines were characterized by an increased expression of the constitutive proteasome subunit  $\beta 5$  harboring mutations in the bortezomib-binding pocket, along with a decreased expression of non-mutated immunoproteasome subunits. Furthermore, these bortezomib-resistant cells displayed cross-resistance to other proteasome inhibitors that target  $\beta$ -subunits of the proteasome [9]. The constitutive proteasome has three proteolytically active subunits;  $\beta 5$  (*PSMB5*),  $\beta 1$  (*PSMB6*), and  $\beta 2$  (*PSMB7*) which harbor the chymotrypsin-like, caspase-like, and trypsin-like catalytic activities, respectively. Upon exposure to inflammatory cytokines, including interferon- $\gamma$  (IFN- $\gamma$ ) or tumor necrosis factor  $\alpha$  (TNF- $\alpha$ ), the constitutive subunits are exchanged for immunoproteasome subunits  $\beta 5i$  (LMP7)  $\beta 1i$  (LMP2), and  $\beta 2i$  (MECL-1) [10]. While  $\beta 5i$  harbors chymotrypsin-like activity as in  $\beta 5$ , whereas  $\beta 2i$  and  $\beta 1i$  contain trypsin-like activity,  $\beta 1i$  displays chymotrypsin-like activity rather than  $\beta 1$ -associated caspase-like activity [11,12]. The immunoproteasome is dominantly expressed in cells of hematologic origin and its primary function was originally attributed to improve MHC Class I antigen presentation. To this end, the immunoproteasome can produce a distinct set of peptides from the constitutive proteasome because the immunoproteasome cleaves preferably after hydrophobic and basic amino acids (cleaved by chymotrypsin-like and trypsin-like activities, respectively) that can better fit MHC Class I molecules [13]. Therefore,

peptides generated by the immunoproteasome may be more efficient in T-cell activation than peptides from the constitutive proteasome. In addition, Seifert and colleagues [14] provided evidence to implicate the immunoproteasome in protein degradation after immune response-induced stress, and that the immunoproteasome is more efficient than the constitutive proteasome in controlling the protein degradation process. However, this property of immunoproteasomes was recently challenged and warrants further investigations [15,16]. Several studies [17-19] have reported higher immunoproteasome expression compared to constitutive subunits in B-cell malignancies, underscoring the potential importance of the immunoproteasome in the homeostasis of hematologic diseases [20]. However, although there is evidence for pre-clinical activity of the  $\beta 5i$ -specific proteasome inhibitor ONX 0914 [21] in experimental autoimmune disease models, data justifying its use for the treatment of hematologic malignancies is limited [2].

Tumor cells have the capacity to modulate immunoproteasome function to escape immune surveillance [22]. This condition may also arise in hematologic tumor cells with acquired resistance to bortezomib due to the acquisition of mutations in the *PSMB5* gene encoding the constitutive  $\beta 5$  subunit. Since its immunoproteasome  $\beta 5i$  counterpart does not harbor mutations, downregulation of immunoproteasome in bortezomib-resistant hematologic tumor cell lines may provide a mechanism to escape targeting by bortezomib. From a therapeutic perspective, this would imply that tipping the balance towards upregulation of immunoproteasome expression could re-confer sensitivity to bortezomib or next generation proteasome inhibitors designed to target immunoproteasomes [20,23].

Original studies by Altun et al [24] showed that inflammatory cytokines such as IFN- $\gamma$  and TNF $\alpha$  were efficient inducers of immunoproteasomes in MM cell lines, including 8226 cells. Functional studies by Busse et al [25] showed that exposure to IFN- $\gamma$  enhanced bortezomib-sensitivity in B-cell lines by 50%, for which the underlying mechanism was unexplored. Furthermore, the  $\beta 5i$  immunoproteasome subunit played a critical role in IFN- $\gamma$ -induced apoptosis by degradation of Mcl-1 in atherosclerotic lesion-derived cells [26].

In this study, we explored whether IFN- $\gamma$ -induced upregulation of immunoproteasome expression in bortezomib-resistant leukemia cell lines in which both immunoproteasome expression is suppressed and mutated  $\beta 5$  subunits are overexpressed can serve as a therapeutic strategy to restore sensitivity towards bortezomib, carfilzomib and ONX 0914.

## Methods

### Cell culture

Human T-cell ALL CCRF-CEM cells, human myeloid leukemia THP1 cells, and human multiple myeloma

RPMI-8226 cells (ATCC, Manassas, VA, USA) were cultured in RPMI-1640 medium containing 2 mM glutamine (Invitrogen/Gibco, Carlsbad, CA, USA) supplemented with 10% fetal calf serum (Greiner Bio-One, Alphen a/d Rijn, The Netherlands) and 100 µg/ml penicillin/streptomycin (Invitrogen) at 5% CO<sub>2</sub> and 37°C. Cell cultures were seeded at a density of 3×10<sup>5</sup> cells/ml and refreshed twice weekly. Bortezomib-resistant sublines of these cell lines were established previously [8,9]. Authenticity of bortezomib-resistant and parental cell lines was verified by STR marker analysis for D12S1045, D8S1132, D19S253, and D17S1293.

#### **Antibodies, drugs and reagents**

Antibodies to proteasome subunits β1, β2, β5, β1i, and β5i were purchased from Enzo Life Sciences (Farmingdale, NY, USA). In addition, anti-actin (clone C4) was purchased from Millipore (Temecula, CA, USA), anti-NOXA antibody from Abcam (Cambridge, UK), anti-ubiquitin (P4D1) from Santa Cruz Biotechnology (Santa Cruz, CA, USA) and the IRDye infrared secondary labeled antibodies was from LI-COR Biosciences (Lincoln, NE, USA). Bortezomib was provided by Millennium Pharmaceuticals (Cambridge, MA, USA). The epoxyketone-based proteasome inhibitors carfilzomib and ONX 0914 were provided by Onyx Pharmaceuticals, Inc. (South San Francisco, CA, USA). IFN-γ was purchased from Sanquin (Amsterdam, the Netherlands).

#### **Proteasome active site ELISA**

An ELISA-based assay (Pro-CISE) for quantitative assessment of active constitutive and immunoproteasome subunits was performed as previously described [27]. Briefly, cell lysate was incubated with a biotinylated proteasome active-site binding probe. Lysate was then denatured, and subunits bound to probe were isolated with streptavidin-conjugated sepharose beads. Individual subunits were probed with subunit-specific primary antibodies, followed by HRP-conjugated secondary antibodies. A chemiluminescent substrate was used to generate signal associated with HRP binding, which was read on a luminometer. Absolute values of nanograms of subunit per microgram of total protein were based on a purified proteasome standard curve. Protein quantification was performed utilizing the Pierce BCA Protein Assay (Thermo Scientific, Rockford, IL, USA).

#### **Lightcycler quantitative PCR**

Lightcycler<sup>®</sup> 480 SYBR Green I Master was used to quantify expression levels of mutated and unmutated allele in the bortezomib-resistant cell lines. Primers specific for the Ala49Thr mutation, primers specific for the unmutated allele, and primers for total *PSMB5* were developed (Tib-molbiol, Germany) (Additional file 1). GUS

was used as housekeeping gene. All primers were used at 0.5 µM each. 5 µl of cDNA template was added to the PCR mix. Results were analysed by advanced relative quantification using the comparative cycle time (Ct) method by Lightcycler 480 Instrument Software version 1.5 (Roche Diagnostics, Switzerland).

#### **Cell growth inhibition assay**

*In vitro* drug sensitivity was determined using the 4-day MTT cytotoxicity assay [28]. Prior to these experiments, bortezomib-resistant cells were cultured in bortezomib-free medium for at least 4 days. Cells were then pre-exposed for 48 h to 100 U/ml IFN-γ and then subjected to various concentrations of bortezomib (range: 0.001 µM – 2 µM), CFZ (0.008 nM - 15.6 nM for the parental cell lines; 0.0005 µM - 1 µM for bortezomib-resistant lines), or ONX 0914 (0.008 µM – 16 µM) for 4 days. For siRNA experiments, cells were incubated with 100 nM siRNA for 24 h before adding 100 U/ml IFN-γ for 48 hours, followed by the same concentration ranges of the drugs as specified above. The IC<sub>50</sub> value was defined as the drug concentration necessary to inhibit 50% of the cell growth compared to growth of the untreated control cells.

#### **Proteasome activity**

##### ***Intact-cell based caspase-like, trypsin-like, and chymotrypsin-like proteasome activities***

An intact cell-based assay to measure basal and IFN-γ-induced upregulation of caspase-like, trypsin-like, and chymotrypsin-like proteasome activities was conducted by using a Proteasome-Glo assay kit according to the manufacturer's instructions (Promega, Madison, WI). Before determination of proteasome activity, cells were exposed to 100 U/ml IFN-γ for 24 h, 48 h, 72 h, and 96 h at 37°C in a white flat-bottomed 96-well plate (Greiner Bio-one, The Netherlands) at a density of 10 000 cells per well in a total volume of 50 µl. After 15-min incubation period with luminogenic substrates, luminescence was determined with an Infinite 200 Pro microplate reader (Tecan, Giessen, The Netherlands). Background measurements of cell-free medium plus substrate were subtracted from cell measurements.

##### ***HLA Class I expression***

HLA Class I expression was determined using HLA-ABC FITC antibody (5 µg/ml) (eBioscience, San Diego, CA, USA) and mouse IgG2a antibody (5 µg/ml) as isotype control. Cells were measured on the FACSDiva, and analyzed using CELLQUEST software.

##### ***Specific β5, β5i, and β1i subunit activities in cell extracts***

For measurement of specific β5, β5i, and β1i activities, the Ac-WLA-AMC, Ac-ANW-AMC, and Ac-PAL-AMC fluorogenic substrates were used, respectively [29]. Cells

were washed in ice-cold phosphate-buffered saline and 5 mM ethylenediaminetetraacetic acid (EDTA) was added at pH 8.0 and samples were frozen at  $-80^{\circ}\text{C}$  until analysis. Samples were thawed and centrifuged at 10,000 g for 10 minutes at  $4^{\circ}\text{C}$ . The supernatant was removed and assayed for protein content using the BioRad Protein Assay following the manufacturer's protocol (BioRad, Hercules, CA, USA).

Assays were performed at  $37^{\circ}\text{C}$  in a final volume of 200  $\mu\text{L}$  using 96-well black opaque plates (Greiner bio-one, Germany). Protein extracts were diluted to 200  $\mu\text{g}/\text{mL}$  in 5 mM EDTA at pH 8.0. Diluted protein extract aliquots (50  $\mu\text{L}$ ) were dispensed per well, giving 10  $\mu\text{g}$  of protein extract per reaction. Reactions were initiated by addition of 150  $\mu\text{L}$  of 133  $\mu\text{M}$  peptide-AMC substrate in 20 mM N-[2-Hydroxyethyl]piperazine-N-[2-ethanesulfonic acid] (HEPES), pH 7.4, containing 0.5 mM EDTA. Peptidase activity was measured by kinetic monitoring of 7-amino-4-methylcoumarin (AMC) production over two hours with a Biotek plate reader (Winooski, VT, USA) and analyzed by GraphPad Prism software (La Jolla, CA, USA) with linear regression analysis.

#### RNA interference

For RNA interference experiments all targeted and non-targeted siRNA constructs were obtained from Dharmacon (Lafayette, USA) and all experiments were performed in 6well plates. THP1/BTZ200 cells were cultured following the DharmaFECT general transfection protocol conditions for THP1 cells. Briefly, prior to transfection, cells were cultured overnight at a density of  $3 \times 10^5$  cells/ml in RPMI-1640 medium supplemented with 10% FCS. Cells were transfected using Dharmafect 2 and 100 nM of *PSMB8* or *PSMB9* ON-TARGETplus SmartPool siRNA. As negative control 100 nM ON-TARGETplus siControl non-targeting siRNA was used and the GAPDH siRNA pool was included as a positive control. The transfection methods had no effect on cell growth. At several time points, transfection-efficiency was determined by mRNA expression analysis. 24 h after siRNA transfection when  $>80\%$  knockdown was established, IFN- $\gamma$  (100 U/ml) was added for 24 h (or 48 h when indicated), followed by bortezomib administration.

#### Protein expression/Western blotting

Protein expression of proteasome subunits was determined by Western blotting, as previously described [9]. Protein bands were quantified by Odyssey software, corrected for background, and normalized by  $\beta$ -actin to correct for loading differences within blots.

#### cDNA synthesis of proteasome subunits and quantitative RT-PCR

After RNA isolation by utilizing the RNeasy Mini kit (Qiagen, Valencia, CA, USA), cDNA was synthesized

using RT buffer (Invitrogen), containing 5 mM DTT (Invitrogen), 2 mM dNTP (Roche), 96  $\mu\text{g}/\text{ml}$  pdN6 (Roche), 0.75 U/ $\mu\text{l}$  M-MLV (Invitrogen) and 2 U/ $\mu\text{l}$  RNasin (HT Biotechnology Ltd., Cambridge, UK). mRNA expression levels of proteasome subunits *PSMB5*, *PSMB6*, *PSMB7*, *PSMB8*, *PSMB9*, *PSMB10*, and  $\beta$ -glucuronidase as a reference were quantified using real-time PCR analysis (Taqman) on an ABI Prism 7700 sequence detection system (PE Applied Biosystems, Nieuwerkerk a/d IJssel, The Netherlands). For *PSMB5*, a Taqman gene expression assay was used according to the manufacturers' instructions (Hs00605652\_m1, Applied Biosystems). All other primers and probes were designed using Primer Express software (Applied Biosystems) and are indicated in Additional file 1. Probes were labeled with 5'-FAM and 3'-BHQ1 as a reporter. Real-time PCR was performed in a total reaction volume of 25  $\mu\text{l}$  containing TaqMan buffer A (Applied Biosystems), 4 mM  $\text{MgCl}_2$ , 0.25 mM of each dNTP (Amersham Pharmacia Biotech) and 1.25 U AmpliTaq Gold DNA polymerase (Applied Biosystems). Samples were heated for 10 min at  $95^{\circ}\text{C}$  to activate the AmpliTaq Gold DNA polymerase and amplified during 40 cycles of 15 s at  $95^{\circ}\text{C}$  and 60 s at  $60^{\circ}\text{C}$ . Relative mRNA expression levels of the target genes in each sample were calculated using the comparative cycle time (Ct) method. The Ct of the target gene was normalized to the GUS Ct value by subtracting the GUS Ct value from the target Ct value. The mRNA expression level for each target PCR relative to GUS was calculated using the following equation: mRNA expression =  $2^{(\text{Ct}_{\text{target}} - \text{Ct}_{\text{GUS}})} \times 100\%$ .

#### Statistical analysis

A logistic (or Emax) model was chosen to model the sigmoid-shaped relationship between concentration of the drug and percentage growth allowing for different parameters values for the experiments without and with IFN- $\gamma$ . The expected percentage growth was assumed to be of the following parametric form

$$E[\% \text{Growth}] = \frac{\text{Max} + 1_{\text{INF}} \Delta \text{Max}}{1 + \left( \frac{\text{concentration}}{\text{IC}_{50} + 1_{\text{INF}} \Delta \text{IC}_{50}} \right)^{\text{Hill}_{50} + 1_{\text{INF}} \Delta \text{Hill}}},$$

where  $1_{\text{INF}} = 0$  and 1 for experiments without and with IFN- $\gamma$ , respectively. The parameters *Max*,  $\text{IC}_{50}$ , and *Hill* model the maximum of the percentage growth, the concentration at which the percentage growth is 50% of the maximum and the slope of the curve for the experiments without IFN- $\gamma$ . Parameters  $\Delta \text{Max}$ ,  $\Delta \text{IC}_{50}$ , and  $\Delta \text{Hill}$  model the change in these parameters as a result of adding IFN- $\gamma$ . Our models included additive random effects for replicate and a residual error which were assumed to be normally distributed and independent. Nonlinear mixed models were fitted in SAS version 9.2 separately for each drug and cell line combination.

Statistical significance of the differences in subunit expression and proteasome activity were determined using the Mann-Whitney U test. Statistical significance was achieved when  $P < 0.05$ . Statistical analyses were performed using SPSS (version 20.0).

## Results

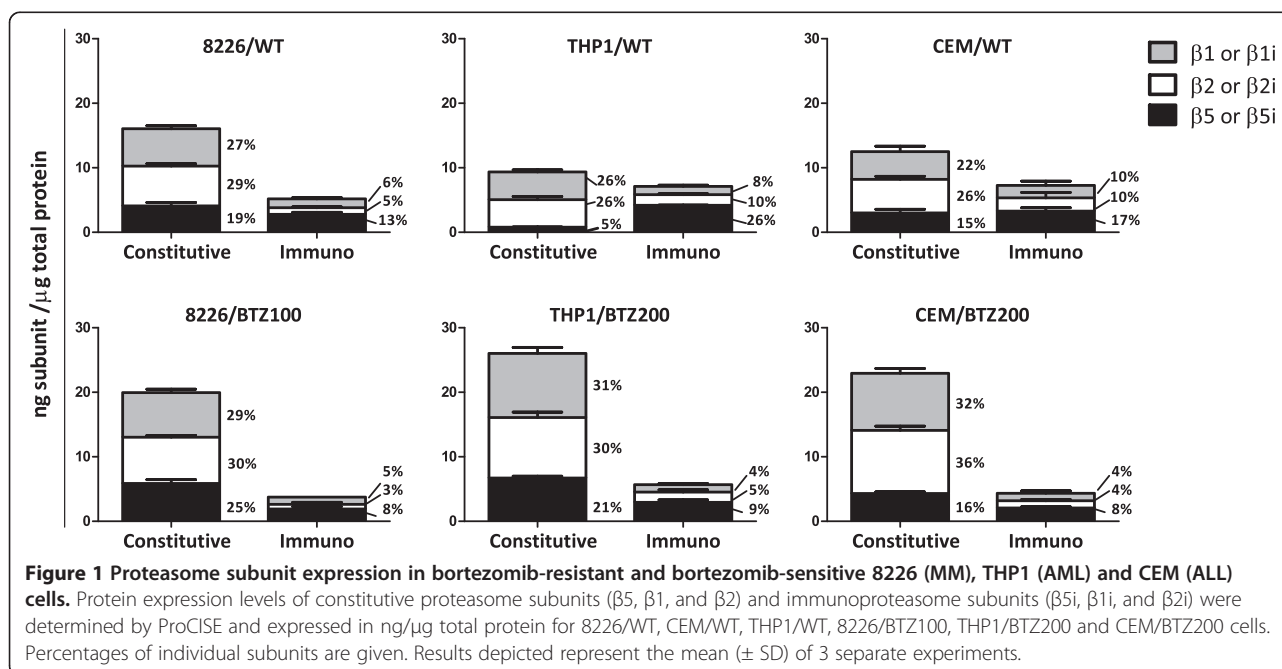
### Characterization of bortezomib-sensitive and bortezomib-resistant hematologic tumor cell lines

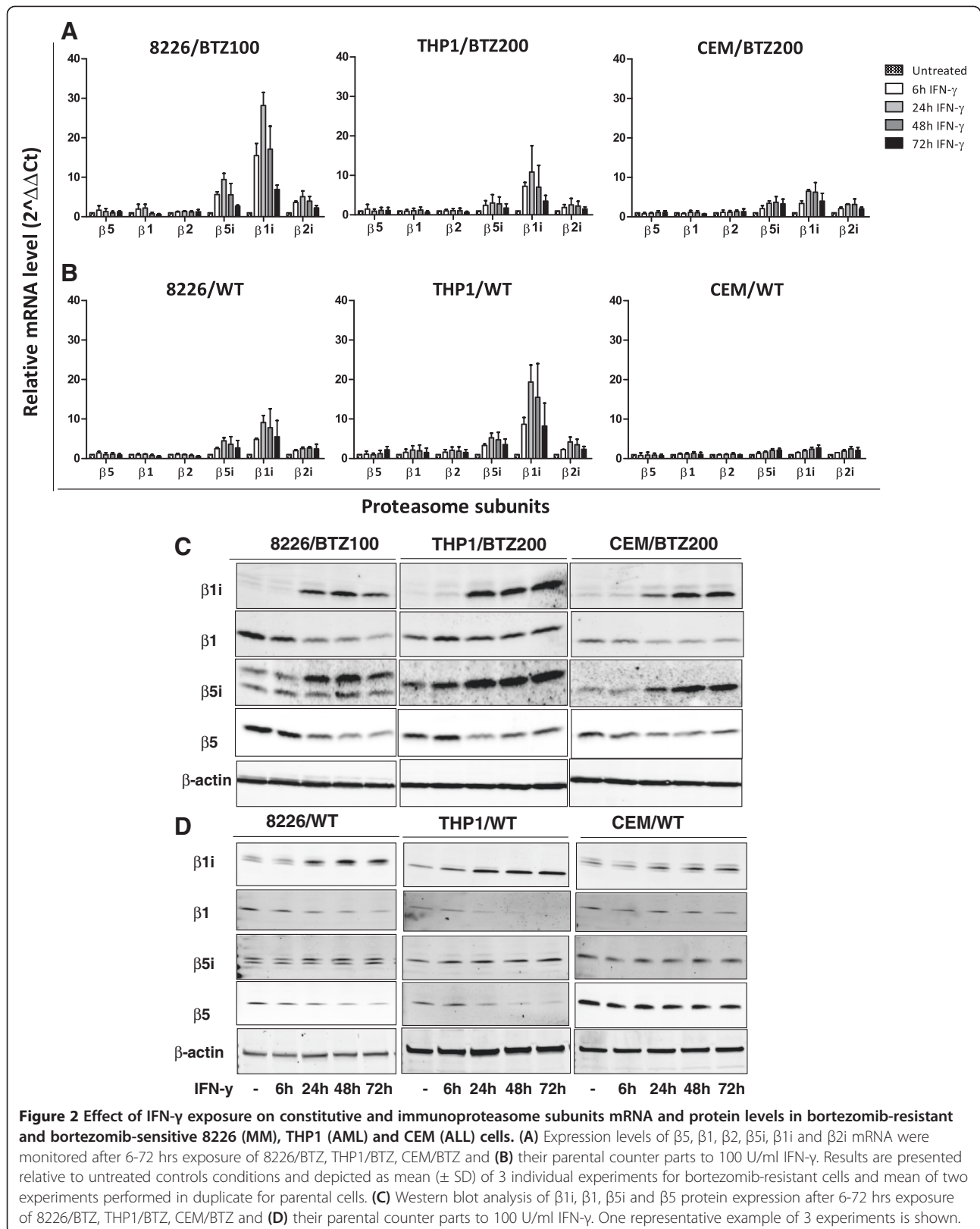
Cell lines were of multiple myeloma (8226), T-cell leukemia (CCRF-CEM) and myelomonocytic leukemia (THP1) origin and their bortezomib-resistant sublines displayed 40-150 fold bortezomib resistance upon cell growth inhibition [8,9]. When studying the absolute protein expression in ng subunit/ $\mu$ g total protein of the catalytically active subunits in wild type (WT) and bortezomib-resistant sublines, all WT tumor cell lines harbored a lower amount of immunoproteasomes ( $\beta 1i + \beta 2i + \beta 5i$ ) than constitutive proteasomes ( $\beta 1 + \beta 2 + \beta 5$ ) (8226/WT: 24% vs. 76%, THP1/WT: 43% vs. 57%, and CEM/WT: 37% vs. 63%, respectively). All three bortezomib-resistant sublines displayed a decrease in immunoproteasome expression while an increase in constitutive subunits was observed (8226/BTZ100: 16% vs. 84%, THP1/BTZ200: 18% vs. 82%, and CEM/BTZ200: 16% vs. 84%, respectively) (Figure 1). Additionally, total proteasome content per  $\mu$ g total protein was increased in CEM/BTZ200 and THP1/BTZ200 cells compared to their WT counterparts (19.8 ng/ $\mu$ g vs. 27.3 ng/ $\mu$ g for CEM/BTZ200 and 16.5 ng/ $\mu$ g vs. 31.7 ng/ $\mu$ g for THP1/BTZ200 cells), whereas the proteasome content in 8226/

BTZ100 was similar to that of 8226/WT (21.2 ng/ $\mu$ g vs. 23.7 ng/ $\mu$ g) (Figure 1).

### IFN- $\gamma$ exposure tips balances from constitutive proteasomes to immunoproteasomes

Since low levels of immunoproteasome expression appeared to be a characteristic feature of bortezomib-resistant tumor cell lines, we aimed at increasing immunoproteasome levels by exposing cell lines to IFN- $\gamma$  (100 U/ml) for 6-72 h. Indeed, IFN- $\gamma$  transiently increased (peaks between 24-48 hours) mRNA levels of  $\beta 5i$ ,  $\beta 1i$ , and  $\beta 2i$  up to 8-fold, 30-fold and 4-fold, respectively. In contrast, constitutive subunits slightly decreased after 24 h (Figure 2A). For comparison, parental cells essentially showed a similar pattern of immunoproteasome mRNA induction, except that the degree of induction was markedly lower than in bortezomib-resistant cells; only THP1/WT cells displayed a higher induction compared to THP1/BTZ200 (Figure 2B). These findings were corroborated at the protein level using Western blot analysis (Figure 2C-D) and the ELISA-based ProCISE assay (Additional file 2), illustrating an increase in  $\beta 5i$ ,  $\beta 1i$ , and  $\beta 2i$  subunit expression along with a decreased expression of constitutive subunits after IFN- $\gamma$  exposure. To determine whether or not the mutated and/or wild type allele of *PSMB5* was down-regulated, mutation-specific primers (for Ala49Thr), wild type-specific primers, and primers for total exon 2 of *PSMB5* were developed to quantify the contribution of the mutated allele in 8226/BTZ100 and THP1/BTZ200 before and after 48 hours of IFN- $\gamma$  exposure. First, amplification curves showed that 8226/BTZ100 cells harbored





about 3-fold lower expression of unmutated *PSMB5* mRNA compared to parental 8226/WT cells. However, the expression of total exon 2 of *PSMB5* was about 3-fold higher in 8226/BTZ100 cells compared to 8226/WT cells, which implies that mutated Ala49Thr in the resistant cells outweighs unmutated *PSMB5* (Additional file 3). Similar results were observed for THP1 cells, although THP1/BTZ200 cells expressed slightly higher levels of unmutated *PSMB5* compared to THP1/WT (Additional file 3). Furthermore, expression of these *PSMB5* variants was determined in the resistant cell lines exposed to IFN- $\gamma$ . Of note, total *PSMB5* expression was decreased in cells exposed to IFN- $\gamma$  compared to unexposed cells (8226/BTZ100; 24% decrease, and for THP1/BTZ200; 42% decrease). Moreover, unmutated as well as mutated *PSMB5* expression decreased after exposure to IFN- $\gamma$ . Specifically, unmutated *PSMB5* expression decreased 23% in 8226/BTZ100 cells and 48% in THP1/BTZ200 cells. Mutated *PSMB5* expression decreased 14% in 8226/BTZ100 and 30% in THP1/BTZ200 cells. Accordingly, both mutated and unmutated *PSMB5* expression declined after IFN- $\gamma$  exposure, with dominance for unmutated *PSMB5* (Additional file 3).

Collectively, bortezomib-resistant hematologic tumor cells possess the capacity to markedly induce immunoproteasome levels upon IFN- $\gamma$  stimulation, thereby outweighing mutated and unmutated constitutive proteasome levels.

#### **IFN- $\gamma$ stimulation confers increased proteasome catalytic activity and HLA Class-I molecule expression**

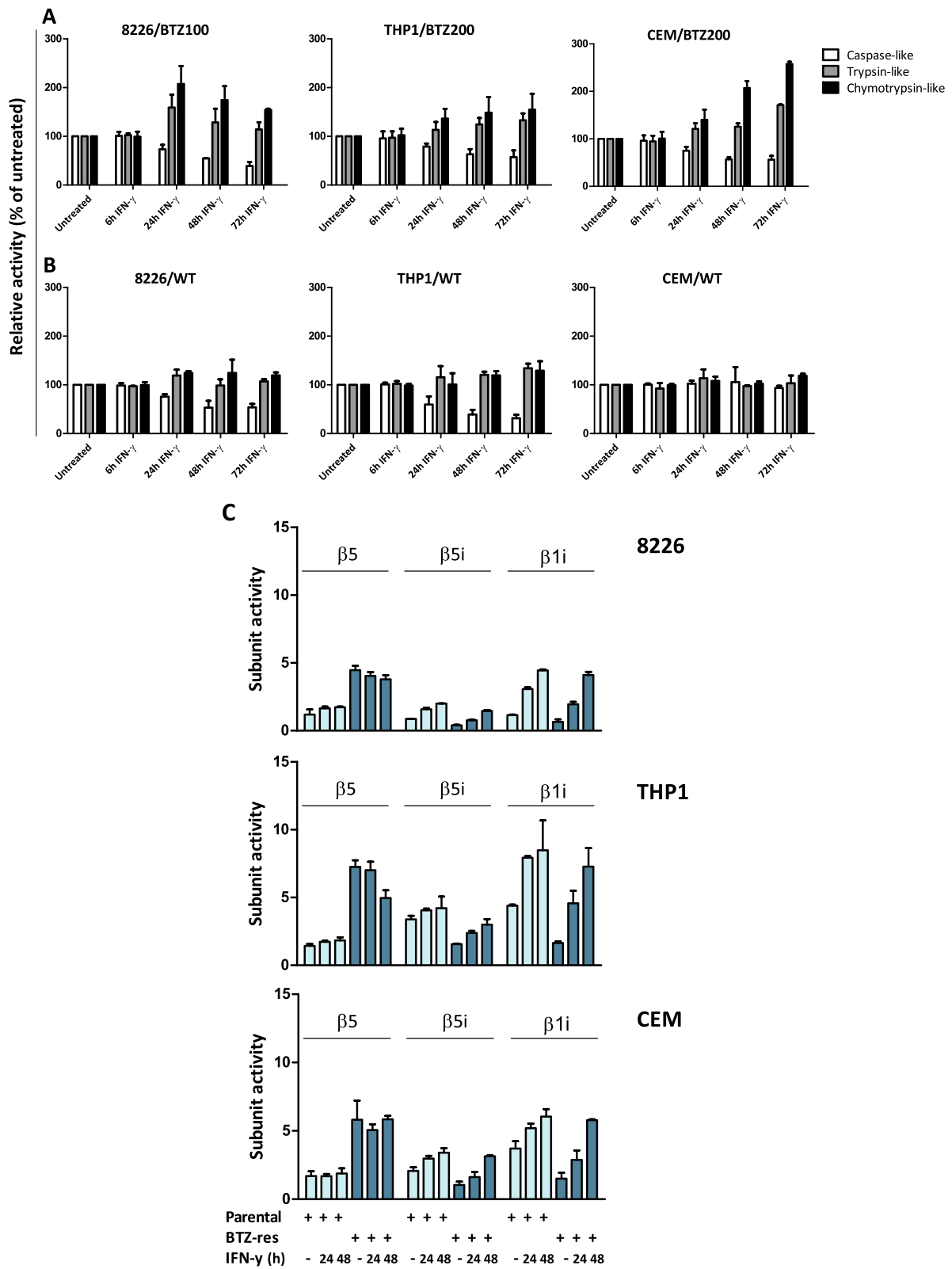
To determine whether increased immunoproteasome expression also impacts proteasome catalytic activity, an intact cell-based assay was used to measure the three catalytic proteasome activities in the three bortezomib-resistant cell lines before and after 6-72 h incubation with IFN- $\gamma$ . Following IFN- $\gamma$  exposure, chymotrypsin-like proteasome activity increased up to 2.5-fold compared to unstimulated controls, and trypsin-like activity increased up to 1.5-fold, whereas caspase-like activity was slightly decreased (Figure 3A). WT cell lines exposed to IFN- $\gamma$  displayed only modest increments in chymotrypsin-like and trypsin-like proteasomal activities, whereas caspase-like activity decreased by 50-65% in 8226 and THP1 cells, but not in CEM/WT cells (Figure 3B). Subdividing the chymotrypsin-like activity into  $\beta 5$  and  $\beta 5i$  catalytic activities with subunit-specific probes showed that  $\beta 5$  activity did not change in cell extracts of 8226/BTZ100 and CEM/BTZ200 cells upon stimulation with IFN- $\gamma$ , whereas in THP1/BTZ200 cells the  $\beta 5$  activity declined after 48 h of IFN- $\gamma$  exposure. For all three parental and bortezomib-resistant cell lines,  $\beta 5i$  and  $\beta 1i$  activities increased upon stimulation with IFN- $\gamma$  (Figure 3C). Consistent with increased

proteasome catalytic activity, increased expression of cell surface HLA Class I was also observed, particularly in 8226/BTZ100 cells (2-fold) and CEM/BTZ200 and THP1/BTZ200 cells (1.5-fold increase). HLA Class I expression in WT cells was increased moderately (up to 50%) (Additional file 4).

#### **IFN- $\gamma$ promotes sensitization of bortezomib-resistant cell lines to cell death by proteasome inhibitors**

As we have recently shown that mutated constitutive  $\beta 5$  subunit is a critical factor in conferring resistance to bortezomib [8,9], we hypothesized that IFN- $\gamma$ -induced upregulation of non-mutated immunoproteasome in bortezomib-resistant cells may re-introduce the targeting capacity of bortezomib and other selective immunoproteasome inhibitors, thereby restoring drug sensitivity. Indeed, cell growth inhibition assays demonstrated that pre-exposure to IFN- $\gamma$  sensitized 8226/BTZ100 cells 4-fold for bortezomib (Figure 4A), 2-fold for Carfilzomib (CFZ; Figure 4B) and 7-fold for the immunoproteasome inhibitor ONX 0914 (Figure 4C). Similar profiles were observed for THP1/BTZ200 after IFN- $\gamma$  exposure, though with slightly lower sensitization factors than for 8226/BTZ100 cells (Figure 4A-C). Sensitization factors for bortezomib and carfilzomib were the lowest for CEM/BTZ200 cells, but still 3-fold sensitization for ONX 0914 (Figure 4A-C).  $IC_{50}$  values were found to differ significantly between experiments without and with IFN- $\gamma$  for all high bortezomib-resistant cell lines and drugs. Sensitization impact induced by IFN- $\gamma$  was further explored in 8226 cells with low levels of bortezomib resistance (8226/BTZ7). Herein, IFN- $\gamma$  significantly restored parental cell sensitivity to ONX 0914 ( $p = 0.03$ ) (Figure 4D). For comparison, parental 8226, THP1 and CEM cells were not sensitized or only marginally sensitized to bortezomib, carfilzomib or ONX 0914 after IFN- $\gamma$  exposure (Additional file 5). Consistently, when PBMCs from healthy individuals were exposed for 24 hours to a concentration range of IFN- $\gamma$ , they also upregulated immunoproteasome subunits, but did not become sensitized for bortezomib (Additional file 6). A composite summary of the impact of IFN- $\gamma$ -induced upregulation of immunoproteasomes on the sensitivity of bortezomib-resistant cells to bortezomib, carfilzomib and ONX 0914 is depicted in Additional file 7.

Restoration of drug sensitivity to (immuno)proteasome inhibitor after IFN- $\gamma$  exposure was further confirmed by apoptosis induction and activation of PARP cleavage. Western blot analysis revealed a marked increase in cleaved PARP and NOXA expression in bortezomib-resistant cells when bortezomib exposure was preceded by IFN- $\gamma$  as compared to bortezomib alone (Figure 5). Next, we examined the accumulation of polyubiquitinated proteins as a hallmark of proteasome inhibition in



**Figure 3** (See legend on next page.)



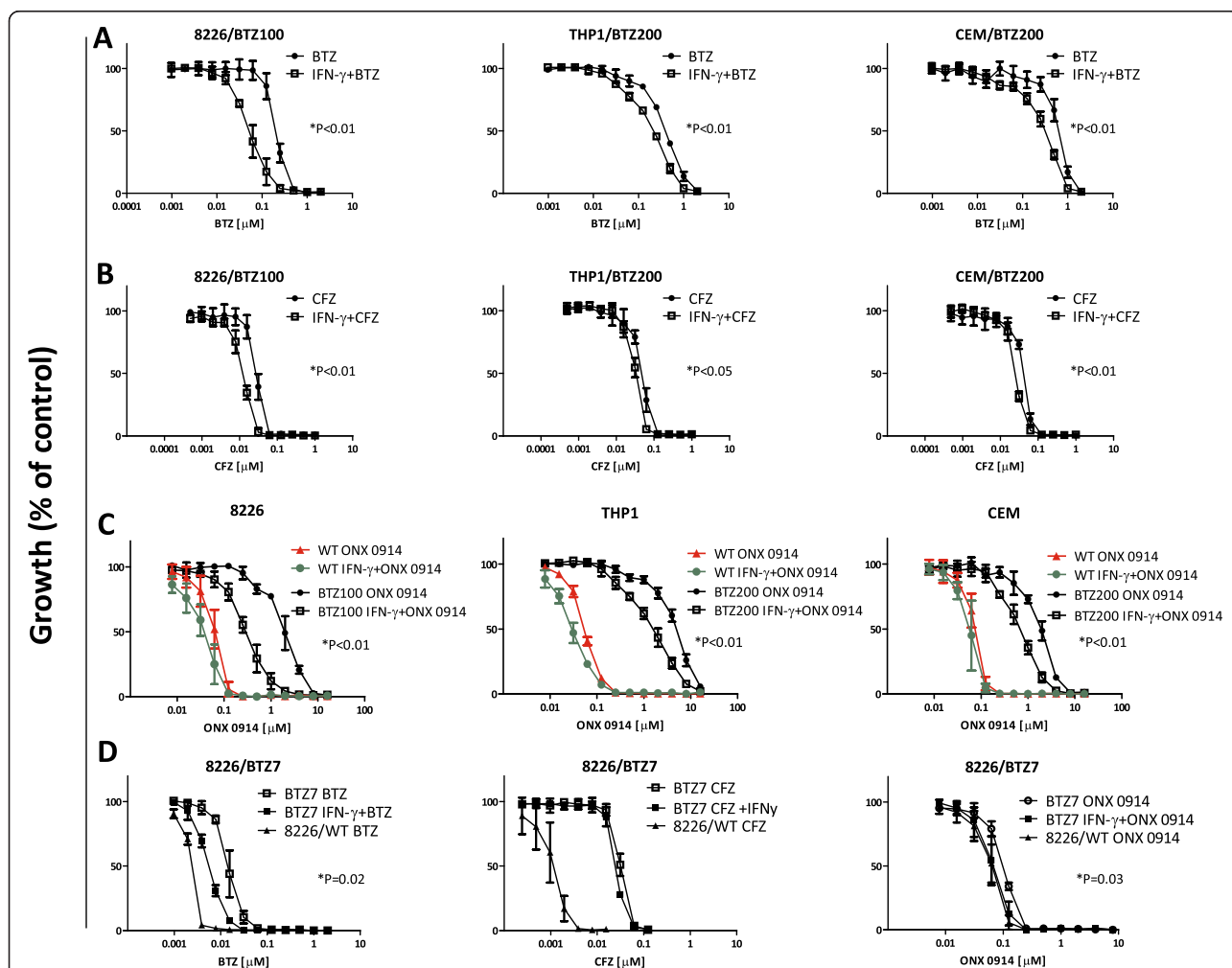
(See figure on previous page.)

**Figure 3 Impact of IFN- $\gamma$  exposure on proteasome catalytic activity in intact cells and cell extracts of bortezomib-resistant and bortezomib-sensitive 8226 (MM), THP1 (AML) and CEM (ALL) cells.**

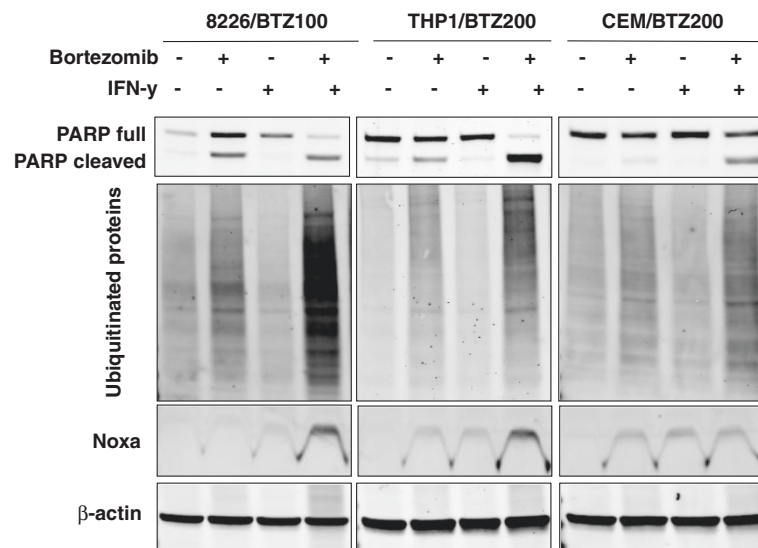
(A) Chymotrypsin-like, caspase-like and trypsin-like proteasome activity in intact bortezomib-resistant and (B) bortezomib-sensitive 8226, THP1 and CEM cells before and after 6-72 hrs exposure 100 U/ml IFN- $\gamma$ . Results are presented relative to untreated controls and represent the mean ( $\pm$  SD) of 3 individual experiments. (C)  $\beta$ 5,  $\beta$ 5i and  $\beta$ 1i-associated catalytic activity in cell extracts of 8226/WT, 8226/BTZ100, THP1/WT, THP1/BTZ, CEM/WT, and CEM/BTZ200 cells after 24 hr and 48 hr exposure to 100 U/ml IFN- $\gamma$ . Activity assays in cell extracts employed subunit-specific substrates. Results represent the mean ( $\pm$  SD) of 3 experiments.

bortezomib-resistant cells upon pre-exposure to IFN- $\gamma$  followed by incubation with the bortezomib concentration they were stably growing in. Exposure to bortezomib or IFN- $\gamma$  alone showed a minimal accumulation of polyubiquitinated proteins in bortezomib-resistant cells. In contrast, pre-exposure to IFN- $\gamma$  in combination with

bortezomib introduced a major accumulation of polyubiquitinated proteins pointing to restoration of proteasome inhibitory activity of bortezomib and subsequent induction of apoptosis (Figure 5). Similar results were noted with cells pre-exposed to IFN- $\gamma$  and subsequently to ONX 0914 for 24 hours (Additional file 8).



**Figure 4 Sensitivity of bortezomib-resistant cell lines to proteasome inhibitors after IFN- $\gamma$  pre-exposure.** Sensitivity of 8226/BTZ100, THP1/BTZ200 and CEM BTZ/200 cells to (A) bortezomib (BTZ) (with and without IFN- $\gamma$ ), (B) Carfilzomib (CFZ) (with and without IFN- $\gamma$ ), and (C) ONX 0914 (with and without IFN- $\gamma$ ), compared to parental cell sensitivity, and (D) and the sensitivity of 8226/BTZ7 cells to BTZ, CFZ, and ONX 0914, as determined by MTT cytotoxicity assays after 4 days drug exposure. Pre-exposure with 100 U/ml IFN- $\gamma$  was for 24h prior to 4-day BTZ, CFZ and ONX 0914 addition. Results represent the mean ( $\pm$  SD) of 3 individual experiments. P-values indicate differences between BTZ-resistant cells exposed or unexposed to IFN- $\gamma$ .



**Figure 5 Apoptosis induction and accumulation of ubiquitinated proteins in bortezomib-resistant 8226 (MM), THP1 (AML) and CEM (ALL) cells after sensitizing cells for bortezomib with IFN- $\gamma$ .** Western blot analysis of PARP cleavage and expression of NOXA as indicators of apoptosis and accumulation of polyubiquitinated proteins in untreated cells, after 24 h exposure to bortezomib (100 nM for 8226/BTZ100 and 200 nM for both CEM/BTZ200 and THP1/BTZ200), single IFN- $\gamma$  (100 U/ml), or the combination of IFN- $\gamma$  and bortezomib.

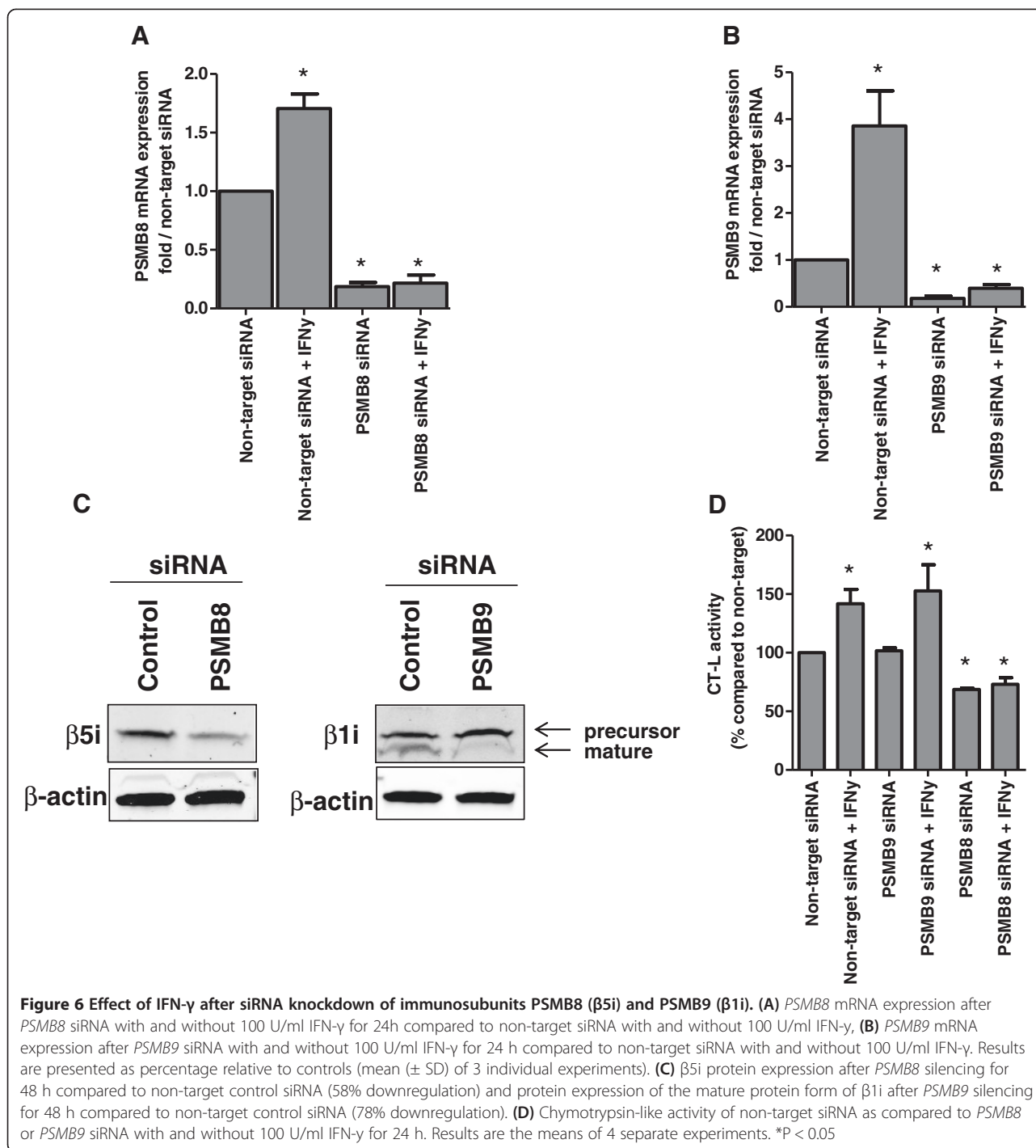
#### Immunoproteasome subunit $\beta$ 5i is responsible for the sensitization of bortezomib-resistant cell lines

To provide evidence that upregulation of  $\beta$ 5i and/or  $\beta$ 1i by IFN- $\gamma$  was responsible for the observed sensitization to proteasome inhibitor, siRNA-dependent downregulation of *PSMB8* ( $\beta$ 5i) and *PSMB9* ( $\beta$ 1i) was applied in THP1/BTZ200 cells prior to exposure to IFN- $\gamma$ . Under these conditions, mRNA levels of *PSMB8* and *PSMB9* remained significantly ( $P = 0.03$ ) suppressed for approximately 80%, even after exposure to IFN- $\gamma$ , compared to non-target siRNA (Figure 6A-B). Expression of  $\beta$ 5i and  $\beta$ 1i protein was suppressed for 58% and 78% after 48 h of *PSMB8* and *PSMB9* silencing respectively, compared to non-target control siRNA (Figure 6C). Consistently, after siRNA downregulation of *PSMB8*, but not *PSMB9*, chymotrypsin-like proteasome catalytic activity significantly ( $P = 0.03$ ) declined to 50% of its control and remained suppressed after exposure to IFN- $\gamma$  (Figure 6D). Lastly, we determined sensitivity to ONX 0914 and bortezomib with 4-day MTT cytotoxicity assays after *PSMB8* and *PSMB9* silencing with or without IFN- $\gamma$  pre-exposure. After the sole silencing of *PSMB8*, THP1/BTZ200 cells became slightly more resistant to bortezomib and ONX 0914, while *PSMB9* silencing did not exert any effect (Figure 7A-B). When cells were exposed to IFN- $\gamma$  after *PSMB8* silencing, bortezomib and ONX 0914 sensitization was attenuated. In contrast, exposure to IFN- $\gamma$  after silencing of *PSMB9* expression had less effect on bortezomib and ONX 0914 sensitization (Figure 7C-D), indicating that  $\beta$ 5i represents the major determinant in exerting apoptosis

and growth inhibitory effects of bortezomib and ONX 0914 after exposure to IFN- $\gamma$ .

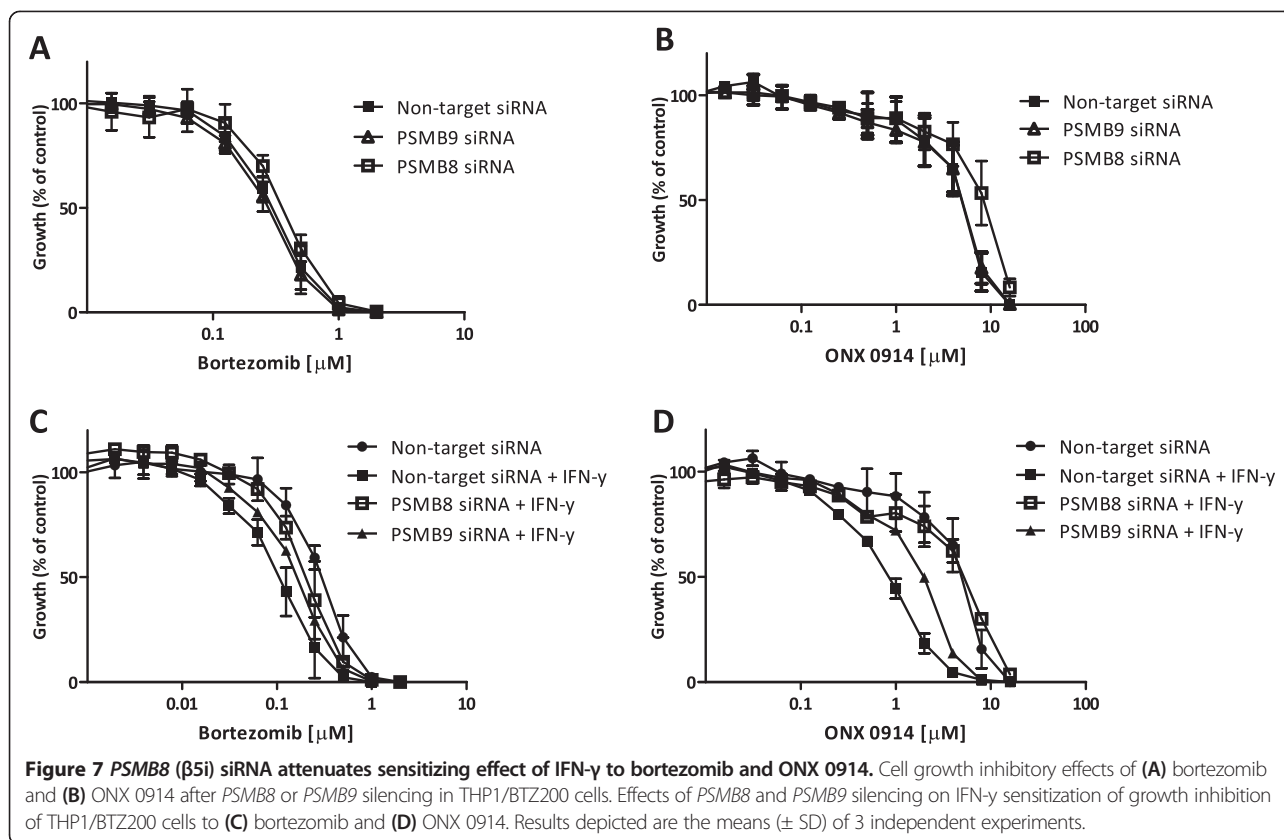
#### Discussion

The present study is the first to document the impact of IFN- $\gamma$  on constitutive- and immunoproteasome homeostasis in three bortezomib-resistant tumor cell lines of different hematologic origin and to assess the implications for anti-proliferative activity of proteasome inhibitors. Characteristically, the bortezomib-resistant cell lines largely expressed the mutated form of *PSMB5*, and clearly, IFN- $\gamma$  increased the expression of catalytically active immunoproteasome levels in bortezomib-resistant cells with concurrent downregulation of both mutated and unmutated alleles of constitutive  $\beta$ 5. This property facilitated sensitization to bortezomib, and an even more pronounced sensitization to the immunoproteasome inhibitor ONX 0914. Sensitization effects were most prominent in 8226/BTZ cells and lowest in CEM/BTZ cells, which may be related to the fact that CCRF-CEM leukemia cells have low levels of IFN- $\gamma$  receptors [30]. At equal doses of IFN- $\gamma$ , induction of immunoproteasome  $\beta$ 5i and  $\beta$ 1i subunit mRNA and protein expression was significantly higher (up to 4-fold) in bortezomib-resistant tumor cells compared to parental cells. Concomitantly, constitutive proteasome subunits were clearly downregulated at a protein level, but not as much on mRNA levels. This phenomenon was also reported by others (reviewed by Ebstein et al [31]), indicating that downregulation of constitutive subunits involves a post-transcriptional



mechanism. Nonetheless, by employing a very sensitive lightcycler RT-PCR technique, a moderate downregulation on mRNA level was detectable. Additionally, in PBMCs from healthy individuals, the same results were noticed as in the parental cell lines when exposed to IFN- $\gamma$ , and call for further analyses in bortezomib-resistant patient specimen. It is not clear whether the upregulation of immunoproteasome levels reflects a

compensatory and homeostatic effect after initial downregulation during bortezomib resistance development. Importantly, increased  $\beta$ 5i expression can drive incorporation of immunoproteasome subunits into prototypic immunoproteasomes [32] or facilitate assembly in hybrid types of proteasomes ( $\beta$ 1 +  $\beta$ 2 +  $\beta$ 5i and  $\beta$ 1i +  $\beta$ 2 +  $\beta$ 5i) [33]. Conceivably, these hybrid forms could compensate for impaired catalytic activity of constitutive proteasomes



assembled with a mutated  $\beta 5$ -subunit. Following use of  $\beta 5$ -selective substrates, chymotrypsin-like catalytic activity in cell extracts of bortezomib-resistant cells increased 2-4 fold over those of parental cells (Figure 3B). These observations are consistent with our previous report in which we observed, using native gel electrophoresis, proficient catalytic capacity of mutated  $\beta 5$  subunit-harboring proteasomes in CEM/BTZ cells for chymotrypsin-like probes, but a diminished inhibitory capacity by bortezomib [9]. Likewise, Kale et al [34] showed that strains of the marine actinobacterium *Salinispora tropica* could maintain self-resistance to the proteasome inhibitor salinosporamide A by expressing a proteasome variant harboring  $\beta 5$  subunit mutations similar to those detected in human THP1/BTZ cells [8,9]. This mutated  $\beta 5$  subunit had retained its capacity to hydrolyze  $\beta 5$ -specific substrates, but displayed a diminished sensitivity to inhibition by salinosporamide A.

The expanding knowledge of factors determining bortezomib sensitivity or resistance that emerged from cell line studies (reviewed in ref [35]), still awaits translation and implementation in a clinical setting. With respect to the role of immunoproteasomes, a recent report from our laboratory showed that higher ratios of immunoproteasome over constitutive proteasome in acute leukemia patient samples served as an important parameter for their *ex vivo* sensitivity to bortezomib and ONX 0914

[19]. In addition, Shuqing et al [36] showed an increase in constitutive *PSMB5* mRNA expression in a myeloma patient after bortezomib treatment compared to the pre-treatment sample. Also recently, Leung-Hagensteijn et al [37] showed that immunoproteasome subunit expression was decreased in patients with myeloma tumors resistant to bortezomib, compared to bortezomib-sensitive patients. This study also revealed that the loss of Xbp1 signaling (which is required for plasma cell differentiation and regulation of unfolded protein response) induced bortezomib-resistance in MM cell lines and patient cells. Based on these considerations, strategies that may increase immunoproteasome levels may merit further exploration for therapeutic intervention.

Despite the fact that IFN- $\gamma$ -induced upregulation of immunoproteasomes facilitates sensitization of bortezomib-resistant cells to bortezomib and ONX 0914, IFN- $\gamma$  exposure does not establish full restoration of parental sensitivity to bortezomib. This may be due to two reasons; first, inhibition of the catalytic activity of the immunoproteasome alone appears insufficient to exert a cell growth inhibitory effect. Rather, this requires inhibition of chymotrypsin-like activity and co-inhibition of caspase-like or trypsin-like activities [38,39]. Second, the constitutive  $\beta 5$  subunit is structurally altered in all 3 bortezomib-resistant tumor cell lines due to mutations in the *PSMB5* gene introducing

single amino acid substitutions (e.g. Ala49Thr) in the bortezomib-binding pocket leading to diminished bortezomib binding efficiency [8,9]. This structural alteration precludes optimal inhibition of the  $\beta 5$  subunit by bortezomib as present in parental cells, thus retaining a significant degree of bortezomib resistance. These considerations specifically apply for cells with a high level (> 100-fold) of bortezomib resistance. In cells (e.g. 8226/BTZ7 cells) with a more clinically relevant low level (~ 5-fold) resistance to bortezomib, IFN- $\gamma$  exposure reversed 50% of bortezomib resistance and achieved parental sensitivity to ONX 0914 (Figure 4D, Additional file 7). The latter observation is consistent with data from Huber et al [40] who showed that incorporation of immunoproteasome subunits confers structural alterations in the 20S proteasome complex, resulting in improved accessibility of ONX 0914 to the active sites, which would underlie a mechanism for the largest differential sensitizing effect observed with ONX 0914 as compared to bortezomib and carfilzomib.

Knockdown experiments revealed that  $\beta 5i$  expression is critically involved in mediating the proteasome inhibitor-sensitizing effects in bortezomib-resistant tumor cells. The role of  $\beta 5i$  may first be related to proteasome assembly, in which  $\beta 5i$  is required for processing the  $\beta 1i$  and  $\beta 2i$  subunits [41]. Consistently,  $\beta 5i$  deficiency delays immunoproteasome assembly [41]. Beyond increased immunoproteasome subunit expression after IFN- $\gamma$  exposure, chymotrypsin-like and trypsin-like proteasome catalytic activities were increased, whereas caspase-like activity was decreased. Employing subunit activity-specific probes indicated that the increase in chymotrypsin-like activity was solely accountable for by the increase in  $\beta 5i$  but not  $\beta 5$  catalytic activity. At the same time, the decrease in caspase-like activity was solely due to reduced  $\beta 1$  activity since  $\beta 1i$  activity actually increased upon stimulation with IFN- $\gamma$ . Thus, our findings in bortezomib-resistant cells underscore studies showing that replacement of  $\beta 1$  with  $\beta 1i$  decreased caspase-like activity and enhanced  $\beta 5i$ -associated chymotrypsin-like activity [11,12,42]. Immunologically, a rise in chymotrypsin-like activity would result in the generation of more peptides with hydrophobic C-terminal residues for presentation on MHC class-I molecules [11]. As such, a prominent IFN- $\gamma$ -induced switch from constitutive to immunoproteasomes in bortezomib-resistant cells could lead to gain of efficiency in antigen presentation by increased peptide loading after immunoproteasome peptide processing. In our study, *PSMB8*/ $\beta 5i$ -downregulation resulted in a 50% decrease of chymotrypsin-like activity, whereas  $\beta 1i$  downregulation had no effect on any of the three catalytic activities (data not shown). This phenotype seems fully compatible with that of  $\beta 5i$ -deficient mice displaying a 50% decrease in the expression of MHC class-I molecules;

these alterations were not observed in  $\beta 1i$ - or  $\beta 2i$ -deficient mice [13,43,44].

Krüger and Kloetzel [45] suggested that IFN- $\gamma$  induction combines enhanced translational activity with a rapid increase in the pool of polyubiquitinated proteins that require processing by the proteasome. In this context, the IFN- $\gamma$ -induced synthesis of immunoproteasomes may represent a physiological adaptation to this cytokine-induced oxidative stress. If cells under these conditions were to be exposed to proteasome inhibitors, blocking of functional activity of newly formed immunoproteasomes would result in additional accumulation of polyubiquitinated proteins, causing cell stress and induction of apoptotic cell death. The bortezomib-resistant cell lines did reveal accumulation of polyubiquitinated proteins as in bortezomib-sensitive parental cells but at higher bortezomib concentrations to which they are adjusted [8,9]. This is likely due to an adaptive mechanism in bortezomib-resistant cells to enhance the  $\beta 5$ -associated catalytic capacity to process physiological substrates (Figure 3B). Interference with this process by IFN- $\gamma$  induced upregulation of immunoproteasomes and blocking their function with specific inhibitors could then trigger accumulation of polyubiquitinated proteins and apoptotic cell death, hence being in line with the mechanism proposed by Kruger and Kloetzel [45].

## Conclusion

Downregulation of  $\beta 5i$  subunit expression was identified as being an important determinant of acquisition of bortezomib resistance in cell lines of hematologic malignancies. The pharmacological implication of this novel finding is exemplified by the fact that induction of  $\beta 5i$  proteasomal assembly after IFN- $\gamma$  exposure facilitated restoration of sensitivity of bortezomib-resistant cells towards bortezomib and in particular to immunoproteasome inhibitors.

## Additional files

**Additional file 1: Table S1.** Proteasome subunit primer design and siRNA sequences.

**Additional file 2: Figure S1.** Effect of IFN- $\gamma$  exposure on constitutive and immunoproteasome subunit protein levels in bortezomib-resistant and bortezomib-sensitive 8226 (MM), THP1 (AML) and CEM (ALL) cells. Expression levels of  $\beta 5$ ,  $\beta 1$ ,  $\beta 2$ ,  $\beta 5i$ ,  $\beta 1i$  and  $\beta 2i$  protein were analyzed by ProCISE assay after 6-72 hrs exposure of 8226/BTZ100, THP1/BTZ200, CEM/BTZ200 cells and their parental counter parts to 100 U/ml IFN- $\gamma$ . Protein levels are expressed in ng subunit/ $\mu$ g total protein and data represent the mean ( $\pm$  SD) of 3 individual experiments.

**Additional file 3: Figure S2.** Quantification of mutated and unmutated *PSMB5* expression in bortezomib-resistant 8226 (MM) and THP1 (AML) cells after IFN- $\gamma$  exposure. mRNA expression of total *PSMB5* and unmutated *PSMB5* in; (A) 8226/BTZ100 cells compared to parental 8226 cells, (B) THP1/BTZ200 compared to parental THP1 cells. Expression of total *PSMB5*, unmutated *PSMB5*, and *PSMB5* harboring Ala49Thr mutation in (C); 8226/BTZ100 cells exposed to 100 U/ml IFN- $\gamma$  for 48 hours, and (D); THP1/BTZ200

cells exposed to 100 U/ml IFN- $\gamma$  for 48 hours, as determined by lightcycler RT-PCR analysis.

**Additional file 4: Figure S3.** Impact of IFN- $\gamma$  exposure on HLA-Class I expression in bortezomib-resistant and bortezomib-sensitive 8226 (MM), THP1 (AML) and CEM (ALL) cells. HLA-ABC expression after 6-72h IFN- $\gamma$  exposure in bortezomib-resistant cell lines 8226/BTZ100, CEM/BTZ200, and THP1/BTZ200 and their parental bortezomib-sensitive counterparts. Results represent mean fluorescence index relative to unexposed control cells. Results depict the mean ( $\pm$  SD) of 3 individual experiments.

**Additional file 5: Figure S4.** Sensitivity of parental bortezomib-sensitive cell lines to proteasome inhibitors after IFN- $\gamma$  pre-exposure. Sensitivity of 8226/WT, THP1/WT and CEM/WT cells to (A) bortezomib (BTZ) (with and without IFN- $\gamma$ ), (B) Carfilzomib (CFZ) (with and without IFN- $\gamma$ ), and (C) ONX 0914 (with and without IFN- $\gamma$ ) as determined by MTT cytotoxicity assays after 4 days drug exposure. Pre-exposure with 100 U/ml IFN- $\gamma$  was for 24 h prior to 4-day bortezomib, carfilzomib and ONX 0914 addition. Results represent the mean ( $\pm$  SD) of 3 individual experiments.

**Additional file 6: Figure S5.** Sensitivity of PBMCs of healthy individuals to bortezomib after IFN- $\gamma$  pre-exposure and upregulation of immunoproteasome subunits. (A) Sensitivity of PBMCs to bortezomib (with and without 100 U/ml IFN- $\gamma$ ), as determined by MTT cytotoxicity assays after 48 hours of drug exposure. (B) mRNA expression of immunoproteasome subunits *PSMB8* and *PSMB9* upon exposure to various concentrations of IFN- $\gamma$  for 24 hours. Results represent the mean ( $\pm$  SD) of 3 healthy individuals.

**Additional file 7: Table S2.** Summary effect of IFN- $\gamma$  exposure on growth inhibition of bortezomib-resistant and bortezomib-sensitive 8226, THP1 and CEM cells by bortezomib, carfilzomib and ONX 0914.

**Additional file 8: Figure S6.** Accumulation of ubiquitinated proteins in bortezomib-resistant 8226 (MM), THP1 (AML) and CEM (ALL) cells after sensitizing cells for ONX 0914 with IFN- $\gamma$ . Western blot analysis of accumulation of polyubiquitinated proteins in untreated cells, after 24 h exposure to ONX 0914 (250 nM for 8226/BTZ100, 566 nM for CEM/BTZ200 and 1376 nM for THP1/BTZ200), single IFN- $\gamma$  (100 U/ml), or the combination of IFN- $\gamma$  and ONX 0914.

#### Competing interests

CJK and JLA are employees of Onyx Pharmaceuticals, Inc.

#### Authors' contributions

DN, JM and JA performed experiments; JLB designed and validated protocols for proteasome subunit specific activity probes. PV performed the statistical analyses. DN and JA analyzed results and prepared the figures; DN, GJ, and JC designed the research and wrote the paper. YGA, CJK, SZ, and GLK discussed the format and content of the article and contributed to the review and editing of the final manuscript. All authors read and approved the final manuscript.

#### Acknowledgement

This study was supported by research funding from the Netherlands Organization for Scientific Research, and KiKa (Children Cancer-free) grant number 51 (G.J.L.K.).

#### Author details

<sup>1</sup>Department of Pediatric Oncology/Hematology, VU University Medical Center, Amsterdam, The Netherlands. <sup>2</sup>The Fred Wyszowski Cancer Research Lab, Technion-Israel Institute of Technology, Haifa, Israel. <sup>3</sup>Research Department, Onyx Pharmaceuticals, South San Francisco, CA, USA. <sup>4</sup>Discovery, Millennium Pharmaceuticals Inc., Cambridge, MA, USA. <sup>5</sup>Department of Hematology, VU University Medical Center, Amsterdam, The Netherlands. <sup>6</sup>Department of Epidemiology and Biostatistics, VU University Medical Center, Amsterdam, The Netherlands. <sup>7</sup>Department of Rheumatology, VU University Medical Center, Amsterdam, The Netherlands.

Received: 16 October 2013 Accepted: 6 January 2014

Published: 13 January 2014

#### References

1. Laubach JP, Schlossman RL, Mitsiades CS, Anderson KC, Richardson PG: **Thalidomide, lenalidomide and bortezomib in the management of newly diagnosed multiple myeloma.** *Expert Rev Hematol* 2011, **4**:51-60.
2. Niewerth D, Dingjan I, Cloos J, Jansen G, Kaspers GJL: **Proteasome inhibitors in acute leukemia.** *Expert Rev Anticancer Ther* 2013, **13**:327-337.
3. Demo SD, Kirk CJ, Aujay MA, Buchholz TJ, Dajee M, Ho MN, Jiang J, Laidig GJ, Lewis ER, Parlati F, Shenk KD, Smyth MS, Sun CM, Vallone MK, Woo TM, Molineaux CJ, Bennett MK: **Antitumor activity of PR-171, a novel irreversible inhibitor of the proteasome.** *Cancer Res* 2007, **67**:6383-6391.
4. Siegel DS, Martin T, Wang M, Vij R, Jakubowiak AJ, Lonial S, Trudel S, Kukreti V, Bahlis N, Alsina M, Chanan-Khan A, Buadi F, Reu FJ, Somlo G, Zonder J, Song K, Stewart AK, Stadtmauer E, Kunkel L, Wear S, Wong AF, Orlowski RZ, Jagannath S: **A phase 2 study of single-agent carfilzomib (PX-171-003-A1) in patients with relapsed and refractory multiple myeloma.** *Blood* 2012, **120**:2817-2825.
5. Kortuem KM, Stewart AK: **Carfilzomib.** *Blood* 2013, **121**:893-897.
6. Kumar SK, Lee JH, Lahuerta JJ, Morgan G, Richardson PG, Crowley J, Haessler J, Feather J, Hoering A, Moreau P, Leleu X, Hulín C, Klein S, Sonneveld P, Siegel D, Blade J, Goldschmidt H, Jagannath S, Miguel JS, Orlowski R, Palumbo A, Sezer O, Rajkumar SV, Durie BG: **Risk of progression and survival in multiple myeloma relapsing after therapy with IMiDs and bortezomib: a multicenter international myeloma working group study.** *Leukemia* 2012, **26**:149-157.
7. Hrusovsky I, Emmerich B, von Rohr A, Voegelí J, Tavera C, Olie RA, Pliskat H, Frohn C, Hess G: **Bortezomib retreatment in relapsed multiple myeloma - results from a retrospective multicentre survey in Germany and Switzerland.** *Oncology* 2010, **79**:247-254.
8. Oerlemans R, Franke NE, Assaraf YG, Cloos J, van Zantwijk I, Berkers CR, Scheffer GL, Debipersad K, Vojtekova K, Lemos C, van der Heijden JW, Ylstra B, Peters GJ, Kaspers GJL, Dijkman BA, Scheper RJ, Jansen G: **Molecular basis of bortezomib resistance: proteasome subunit beta5 (PSMB5) gene mutation and overexpression of PSMB5 protein.** *Blood* 2008, **112**:2489-2499.
9. Franke NE, Niewerth D, Assaraf YG, Van Meerloo J, Vojtekova K, van Zantwijk CH, Zweegman S, Chan ET, Kirk CJ, Geerke DP, Schimmer AD, Kaspers GJL, Jansen G, Cloos J: **Impaired bortezomib binding to mutant beta5 subunit of the proteasome is the underlying basis for bortezomib resistance in leukemia cells.** *Leukemia* 2012, **26**:757-768.
10. Aki M, Shimbara N, Takashina M, Akiyama K, Kagawa S, Tamura T, Tanahashi N, Yoshimura T, Tanaka K, Ichihara A: **Interferon-gamma induces different subunit organizations and functional diversity of proteasomes.** *J Biochem* 1994, **115**:257-269.
11. Groettrup M, Ruppert T, Kuehn L, Seeger M, Standera S, Koszinowski U, Kloetzel PM: **The interferon-gamma-inducible 11 S regulator (PA28) and the LMP2/LMP7 subunits govern the peptide production by the 20S proteasome in vitro.** *J Biol Chem* 1995, **270**:23808-23815.
12. Schmidtke G, Eggers M, Ruppert T, Groettrup M, Koszinowski UH, Kloetzel PM: **Inactivation of a defined active site in the mouse 20S proteasome complex enhances major histocompatibility complex class I antigen presentation of a murine cytomegalovirus protein.** *J Exp Med* 1998, **187**:1641-1646.
13. Groettrup M, Kirk CJ, Basler M: **Proteasomes in immune cells: more than peptide producers?** *Nat Rev Immunol* 2010, **10**:73-78.
14. Seifert U, Bialy LP, Ebstein F, Bech-Otschir D, Voigt A, Schroter F, Prozorovski T, Lange N, Steffen J, Rieger M, Kuckelkorn U, Aktas O, Kloetzel PM, Krüger E: **Immunoproteasomes preserve protein homeostasis upon interferon-induced oxidative stress.** *Cell* 2010, **142**:613-624.
15. Nathan JA, Spinnenhirn V, Schmidtke G, Basler M, Groettrup M, Goldberg AL: **Immuno- and constitutive proteasomes do not differ in their abilities to degrade ubiquitinated proteins.** *Cell* 2013, **152**:1184-1194.
16. Ebstein F, Voigt A, Lange N, Warnatsch A, Schröter F, Prozorovski T, Kuckelkorn U, Aktas O, Seifert U, Kloetzel P-M, Krüger E: **Immunoproteasomes are important for proteostasis in immune responses.** *Cell* 2013, **152**:935-937.
17. Parlati F, Lee SJ, Aujay M, Suzuki E, Levitsky K, Lorens JB, Micklem DR, Ruurs P, Sylvain C, Lu Y, Shenk KD, Bennett MK: **Carfilzomib can induce tumor cell death through selective inhibition of the chymotrypsin-like activity of the proteasome.** *Blood* 2009, **114**:3439-3447.
18. Roccaro AM, Sacco A, Aujay M, Ngo HT, Azab AK, Azab F, Quang P, Maiso P, Runnels J, Anderson KC, Demo S, Ghobrial IM: **Selective inhibition of chymotrypsin-like activity of the immunoproteasome and constitutive proteasome in Waldenström macroglobulinemia.** *Blood* 2010, **115**:4051-4060.
19. Niewerth D, Franke NE, Jansen G, Assaraf YG, van Meerloo J, Kirk CJ, Degenhardt J, Anderl JL, Schimmer AD, de Haas V, Horton TM, Zweegman S,

- Kaspers GJL, Cloos J: Higher ratio immune vs. constitutive proteasome level as novel indicator of sensitivity of pediatric acute leukemia cells to proteasome inhibitors. *Haematologica* 2013, **98**:1896–1904. doi:1896.
20. Kuhn DJ, Orłowski RZ: The immunoproteasome as a target in hematologic malignancies. *Semin Hematol* 2012, **49**:258–262.
  21. Muchamuel T, Basler M, Aujay MA, Suzuki E, Kalim KW, Lauer C, Sylvain C, Ring ER, Shields J, Jiang J, Shwonek P, Parlati F, Demo SD, Bennett MK, Kirk CJ, Groettrup M: A selective inhibitor of the immunoproteasome subunit LMP7 blocks cytokine production and attenuates progression of experimental arthritis. *Nat Med* 2009, **15**:781–787.
  22. Johnsen A, France J, Sy M, Histocompatibility CIM, Lines C, Harding CV: Down-regulation of the transporter for antigen presentation, proteasome subunits, and class I major histocompatibility complex in tumor cell lines. *Cancer Res* 1998, **58**:3660–3667.
  23. Kirk CJ: Discovery and development of second-generation proteasome inhibitors. *Semin Hematol* 2012, **49**:207–214.
  24. Altun M, Galardy PJ, Shringarpure R, Hideshima T, LeBlanc R, Anderson KC, Ploegh HL, Kessler BM: Effects of PS-341 on the activity and composition of proteasomes in multiple myeloma cells. *Cancer Res* 2005, **65**:7896–7901.
  25. Busse A, Kraus M, Na IK, Rietz A, Scheibenbogen C, Driessen C, Blau IW, Thiel E, Keilholz U: Sensitivity of tumor cells to proteasome inhibitors is associated with expression levels and composition of proteasome subunits. *Cancer* 2008, **112**:659–670.
  26. Yang Z, Gagarin D, St Laurent G, Hammell N, Toma I, Hu C-A, Iwasa A, McCaffrey TA: Cardiovascular inflammation and lesion cell apoptosis: a novel connection via the interferon-inducible immunoproteasome. *Arter Thromb Vas* 2009, **29**:1213–1219.
  27. Suzuki E, Demo S, Deu E, Keats J, Rastu-Kapur S, Bergsagel PL, Bennett MK, Kirk CJ: Molecular mechanisms of bortezomib resistant adenocarcinoma cells. *PLoS One* 2011, **6**:e27996.
  28. Van Meerloo J, Kaspers GJ, Cloos J: Cell sensitivity assays: the MTT assay. *Methods Mol Biol* 2011, **731**:237–245.
  29. Blackburn C, Gigstad KM, Hales P, Garcia K, Jones M, Bruzzese FJ, Barrett C, Liu JX, Soucy TA, Sappal DS, Bump N, Olhava EJ, Fleming P, Dick LR, Tsu C, Sintchak MD, Blank JL: Characterization of a new series of non-covalent proteasome inhibitors with exquisite potency and selectivity for the 20S beta5-subunit. *Biochem J* 2010, **430**:461–476.
  30. Ücer U, Bartsch H, Scheurich P, Aöeöer U, Berkovic D, Ertel C, Pfizenmaier K: Quantitation and characterization of  $\gamma$ -interferon receptors on human tumor cells. *Cancer Res* 1986, **46**:5339–5343.
  31. Ebstein F, Kloetzel P-M, Krüger E, Seifert U: Emerging roles of immunoproteasomes beyond MHC class I antigen processing. *Cell Mol Life Sci* 2012, **69**:2543–2458.
  32. Heink S, Ludwig D, Kloetzel PM, Krüger E: IFN- $\gamma$ -induced immune adaptation of the proteasome system is an accelerated and transient response. *Proc Natl Acad Sci U S A* 2005, **102**:9241–9246.
  33. Vigneron N, Van den Eynde BJ: Proteasome subtypes and the processing of tumor antigens: increasing antigenic diversity. *Curr Opin Hematol* 2012, **24**:84–91.
  34. Kale AJ, McGlinchey RP, Lechner A, Moore BS: Bacterial self-resistance to the natural proteasome inhibitor salinosporamide A. *ACS Chem Biol* 2011, **6**:1257–1264.
  35. Kale AJ, Moore BS: Molecular mechanisms of acquired proteasome inhibitor resistance. *J Med Chem* 2012, **55**:10317–10327.
  36. Shuqing L, Jianmin Y, Chongmei H, Hui C, Wang J: Upregulated expression of the PSMB5 gene may contribute to drug resistance in patient with multiple myeloma when treated with bortezomib-based regimen. *Exp Hematol* 2011, **39**:1117–1118.
  37. Leung-Hagsteijn C, Erdmann N, Cheung G, Keats JJ, Stewart AK, Reece DE, Chung KC, Tiedemann RE: Xbp1s-negative tumor B cells and pre-plasmablasts mediate therapeutic proteasome inhibitor resistance in multiple myeloma. *Cancer Cell* 2013, **24**:289–304.
  38. Singh AV, Bandi M, Aujay MA, Kirk CJ, Hark DE, Raje N, Chauhan D, Anderson KC: PR-924, a selective inhibitor of the immunoproteasome subunit LMP-7, blocks multiple myeloma cell growth both in vitro and in vivo. *Br J Haematol* 2011, **152**:155–163.
  39. Britton M, Lucas MM, Downey SL, Pletnev AA, Verdoes M, Tokhunts RA, Goddard AL, Pelphrey PM, Wright DL, Overkleeft S, Kisselev AF: Selective inhibitor of proteasome's caspase-like sites sensitizes cells to specific inhibition of chymotrypsin-like sites. *Journ Chem Biol* 2009, **16**:1278–1289.
  40. Huber EM, Basler M, Schwab R, Heinemeyer W, Kirk CJ, Groettrup M, Groll M: Immuno- and constitutive proteasome crystal structures reveal differences in substrate and inhibitor specificity. *Cell* 2012, **148**:727–738.
  41. Murata S, Yashiroda H, Tanaka K: Molecular mechanisms of proteasome assembly. *Nat Rev Mol Cell Biol* 2009, **10**:104–115.
  42. Gaczynska M, Rock KL, Spies T, Goldberg AL: Peptidase activities of proteasomes are differentially regulated by the major histocompatibility complex-encoded genes for LMP2 and LMP7. *Proc Natl Acad Sci USA* 1994, **91**:9213–9217.
  43. Fehling HJ, Swat W, Laplace C, Kühn R, Rajewsky K, Müller U, von Boehmer H: MHC class I expression in mice lacking the proteasome subunit LMP-7. *Science* 1994, **265**(80):1234–1237.
  44. Kincaid EZ, Che JW, York I, Escobar H, Reyes-Vargas E, Delgado JC, Welsh RM, Karow ML, Murphy AJ, Valenzuela DM, Yancopoulos GD, Rock KL: Mice completely lacking immunoproteasomes show major changes in antigen presentation. *Nat Immunol* 2012, **13**:129–135.
  45. Krüger E, Kloetzel P-M: Immunoproteasomes at the interface of innate and adaptive immune responses: two faces of one enzyme. *Curr Opin Immunol* 2012, **24**:77–83.

doi:10.1186/1756-8722-7-7

**Cite this article as:** Niewerth et al.: Interferon- $\gamma$ -induced upregulation of immunoproteasome subunit assembly overcomes bortezomib resistance in human hematological cell lines. *Journal of Hematology & Oncology* 2014 **7**:7.

**Submit your next manuscript to BioMed Central and take full advantage of:**

- Convenient online submission
- Thorough peer review
- No space constraints or color figure charges
- Immediate publication on acceptance
- Inclusion in PubMed, CAS, Scopus and Google Scholar
- Research which is freely available for redistribution

Submit your manuscript at  
www.biomedcentral.com/submit

