

RESEARCH

Open Access



Romidepsin for the treatment of relapsed/refractory peripheral T cell lymphoma: prolonged stable disease provides clinical benefits for patients in the pivotal trial

Francine Foss^{1*}, Steven Horwitz², Barbara Pro³, H. Miles Prince⁴, Lubomir Sokol⁵, Barbara Balser⁶, Julie Wolfson⁶ and Bertrand Coiffier⁷

Abstract

Background: Achievement of durable responses in patients with relapsed/refractory peripheral T cell lymphoma (PTCL) is challenging with current therapies, and there are few data regarding the potential benefits of continuing treatment in patients with the best response of stable disease (SD). Histone deacetylase inhibitors are a novel class of drugs with activity in T cell malignancies. Romidepsin was approved by the US Food and Drug Administration for the treatment of relapsed/refractory PTCL based on a pivotal trial demonstrating an objective response rate of 25 % (33/130), including 15 % with confirmed/unconfirmed complete response and a median duration of response of 28 months. Our objective was to further study the clinical benefits of romidepsin in patients that had the best response of SD.

Methods: Patients with PTCL relapsed/refractory to ≥ 1 prior therapy were treated with the approved dose of 14 mg/m² romidepsin on days 1, 8, and 15 of six 28-day cycles; patients with SD or response after cycle 6 were allowed to continue on study until progression. By protocol amendment, patients treated for ≥ 12 cycles could receive maintenance dosing twice per cycle; after cycle 24, dosing could be further reduced to once per cycle in those who had received maintenance dosing for ≥ 6 months.

Results: Of the 32 patients (25 %) with the best response of SD, 22 had SD for ≥ 90 days (SD90; cycle 4 response assessment). The longest SD was >3 years in a patient who received maintenance dosing of 14 mg/m² on days 1 and 15 beginning in cycle 13. Patients with the best response of SD90 or partial response achieved similar overall and progression-free survival. Prolonged dosing of romidepsin was well tolerated.

Conclusions: We concluded that patients who achieve SD may consider continuing treatment because the clinical benefits of romidepsin may extend beyond objective responses.

Trial registration: NCT00426764

Keywords: Romidepsin, Peripheral T cell lymphoma, Stable disease

* Correspondence: francine.foss@yale.edu

¹Yale Cancer Center, PO Box 208028, 333 Cedar St, TMP 3, New Haven, CT 06520-8028, USA

Full list of author information is available at the end of the article



Background

Peripheral T cell lymphoma (PTCL) is a heterogeneous group of aggressive T cell and natural killer (NK)-cell disorders typically associated with poor prognosis [1, 2]. Overall, the known subtypes of PTCL comprise ≈ 5 –10 % of the estimated 71,850 cases of non-Hodgkin lymphoma (NHL) diagnosed in the USA in 2015 [2–4]. The median age has been reported as 62 years, and the most common PTCL subtypes in North America are PTCL not otherwise specified (NOS), angioimmunoblastic TCL (AITL), and anaplastic large cell lymphoma (ALCL); ALCL is divided into those positive or negative for anaplastic lymphoma kinase 1 (ALK-1) [4]. Patients with ALK-1-positive ALCL, who tend to be substantially younger than patients with other subtypes (median age of 34 years) [5], generally have improved prognosis compared with other subtypes [4]. Across all subtypes, increased age is a negative prognostic factor for survival [4, 6].

Most patients with PTCL receive induction chemotherapy (e.g., cyclophosphamide, doxorubicin, vincristine, prednisone (CHOP)) as first-line treatment; however, many patients who respond experience rapid relapse [1, 2, 4, 7, 8]. The use of these anthracycline-based therapies to treat PTCL is a result of successful treatment of B cell lymphomas, [1, 2, 7] although only patients with ALK-1-positive ALCL typically have a favorable prognosis [4, 8]. Accordingly, National Cooperative Cancer Network (NCCN) guidelines for patients with ALK-1-positive ALCL recommend first-line treatment with CHOP or CHOEP [8]. Although there are currently no ALK inhibitors approved for ALK-1-positive ALCL, several are undergoing investigation [9, 10]. For patients with other PTCL subtypes, promising results have been observed in early clinical studies of first-line treatments that combine anthracycline-based chemotherapy regimens with novel agents (romidepsin, brentuximab vedotin, belinostat) [11–13].

According to the NCCN guidelines for PTCL, patients with relapsed/refractory disease are those with less than complete response (CR) or loss of CR to first-line therapy [8]. For patients with relapsed/refractory PTCL, NCCN guidelines group those with CR or partial response (PR) and consider stable disease (SD) or progressive disease (PD) as a lack of response to treatment and a trigger to switch therapy [8].

Achievement of durable responses in patients with relapsed/refractory PTCL is difficult, and there are few treatment options [2, 4, 14]. Additionally, a retrospective analysis of patients with PTCL ($N = 205$) demonstrated that objective response rates (ORRs) and progression-free survival (PFS) decrease with each line of therapy [15]. Thus, in the setting of relapsed/refractory PTCL, overall clinical benefit and not just achievement of an objective response must be carefully considered when initiating, continuing, stopping, or switching therapies.

There are few data regarding the potential benefits of continuing therapy for patients with relapsed/refractory PTCL with best response of SD.

Romidepsin is a histone deacetylase inhibitor approved by the US Food and Drug Administration for the treatment of cutaneous TCL (CTCL) in patients who have received at least one prior systemic therapy and PTCL in patients who have received at least one prior therapy [16]. Approval in PTCL was primarily based on results from the pivotal phase 2, single-arm, open-label study in patients with relapsed/refractory PTCL ($N = 131$) [16–18]. This pivotal study demonstrated an ORR of 25 % including 15 % with confirmed/unconfirmed CR (CR/CRu) [16–18] and a median duration of response (DOR) of 28 months (median follow-up 22.3 months) [18] with the longest response ongoing at 56 months [19]. While achievement of CR/CRu was associated with prolonged survival vs all other outcomes, patients who achieved PR or SD for ≥ 90 days (SD90) had similar long-term outcomes, and the majority of those with best response of SD had SD90 [18]. The objective of the analyses reported herein was to further examine the clinical benefit of SD in patients with relapsed/refractory PTCL treated with romidepsin in the pivotal study.

Results

Patient characteristics and disposition

Of the 130 patients with histologically confirmed PTCL, 32 (25 %) had the best response of SD. Baseline patient characteristics among those with best response of SD were similar to those of the overall population (Table 1). The majority of patients (overall or with best response of SD) had advanced disease (stage III/IV, International Prognostic Index ≥ 2 , Eastern Cooperative Oncology Group (ECOG) 1 to 2) and had received ≥ 2 prior therapies for PTCL. Most discontinuations occurred during cycles 1 to 2 of treatment; 59 patients (45 %) were treated for ≥ 3 cycles. The majority of patients with best response \geq SD by independent review committee (IRC) assessment who discontinued during cycles 1 and 2 did so due to PD as assessed by the investigator (two patients due to adverse events (AEs)). Twenty-four patients (18 %) received treatment beyond 6 cycles, 18 of whom (14 %) were treated for ≥ 12 cycles. Romidepsin dose delays and reductions were most common during cycle 2 (19 and 9 %, respectively) and cycle 3 (15 and 7 %, respectively) of treatment.

Long-term outcomes

Of the 32 patients with the best response of SD, 22 (69 %) had SD90 including 14 of 16 patients with PTCL-NOS, 3 of 8 patients with AITL, 3 of 5 patients with ALK-1-negative ALCL, and 2 of 3 patients with rare subtypes (subcutaneous panniculitis-like TCL and cutaneous

Table 1 Key baseline patient demographics and characteristics

Characteristic	Overall (N = 130) ^a	Patients with best response of SD (n = 32)
Age, median (range), y	61 (20–83)	61.5 (24–79)
ECOG performance status ^b		
0	46 (35)	10 (31)
1	66 (51)	17 (53)
2	17 (13)	5 (16)
International Prognostic Index, n (%)		
<2	31 (24)	7 (22)
≥2	99 (76)	25 (78)
PTCL subtype based on central review, n (%)		
PTCL-NOS	69 (53)	16 (50)
AITL	27 (21)	8 (25)
ALK-1-negative ALCL	21 (16)	5 (16)
Other	13 (10) ^c	3 (9) ^d
Stage III/IV at diagnosis, n (%)	91 (70)	20 (63)
Number of prior therapies, n (%)		
1	38 (29)	13 (41)
2	44 (34)	11 (34)
3	19 (15)	3 (9)
4	15 (12)	4 (13)
>4	14 (11)	1 (3)
Type of prior therapy, n (%)		
Chemotherapy	129 (99)	31 (97)
Monoclonal antibody therapy	20 (15)	3 (9)
Other immunotherapy	14 (11)	1 (3)
Radiation	31 (24)	8 (25)
ASCT	21 (16)	3 (9)
Refractory to most recent therapy, n (%)	49 (38)	8 (25)

ASCT autologous stem cell transplant

^a PTCL histologically confirmed by central pathology review

^b One patient in the overall population had missing ECOG performance status at baseline

^c Includes enteropathy-associated TCL (6), subcutaneous panniculitis-type TCL (3), ALK-1-positive ALCL (1), cutaneous $\gamma\delta$ TCL (1), extranodal NK/TCL nasal type (1), and transformed mycosis fungoides (1)

^d Includes enteropathy-type TCL (1), subcutaneous panniculitis-like TCL (1), and cutaneous $\gamma\delta$ TCL (1)

$\gamma\delta$ TCL; Fig. 1). Thus, for the most common subtypes, the rate of disease control (CR/CRu + PR + SD90) was 49 % (34/69) for PTCL-NOS, 44 % (12/27) for AITL, and 38 % (8/21) for ALK-1-negative ALCL. Six patients had SD for ≥ 6 months, and the longest SD was > 3 years in duration (Fig. 1). Of note, 6 patients with best response of SD (IRC) were found to have a response (5 CR, 1 PR) by exploratory PET endpoint. All 6 of these patients had achieved SD90 by IRC assessment (time to progression (TTP) 112–176 days). For the 6 patients with SD (IRC) for ≥ 6 months, 5 also had SD by PET endpoint; 1 did

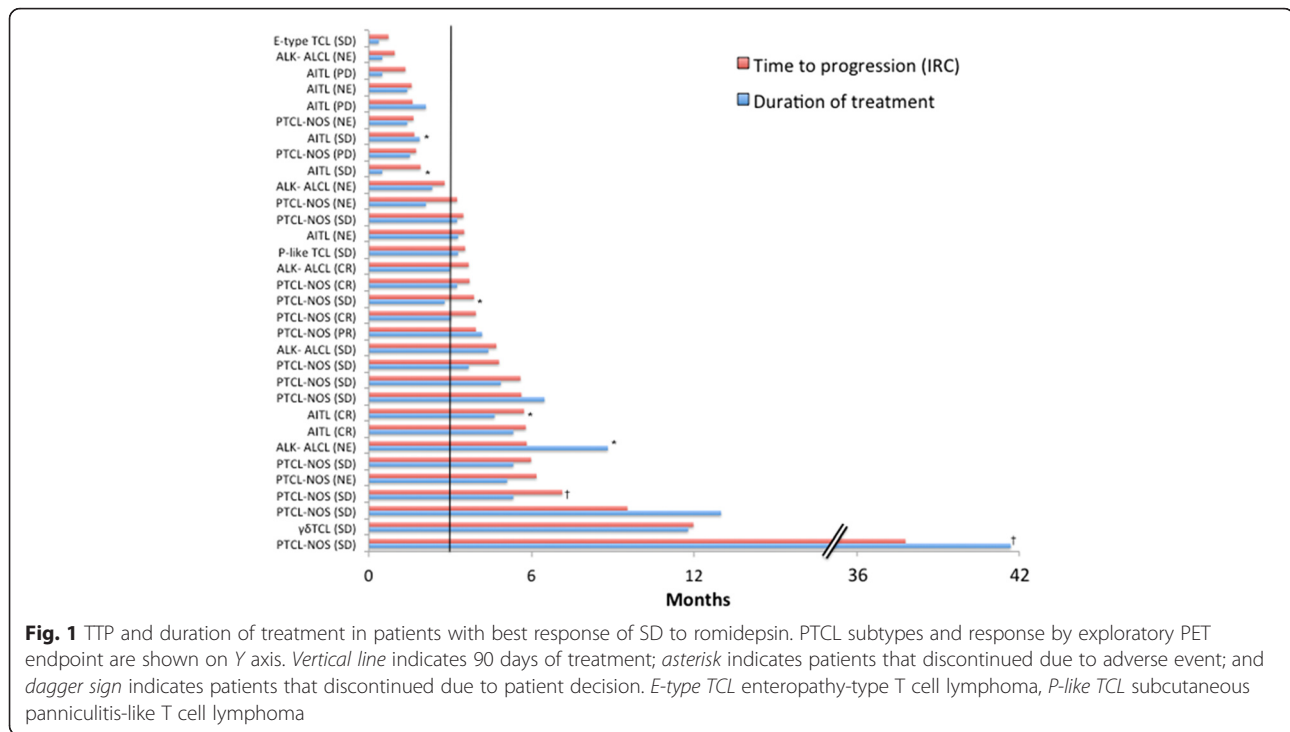
not have PET assessments (Fig. 1). Three patients with best response of SD (IRC) were found to have PD by exploratory PET endpoint, each with a short TTP (IRC) of 41, 49, and 53 days.

As previously reported with an earlier data cutoff (December 31, 2011) [18], for patients with the best response of SD90, PFS and OS were not statistically different compared with patients who achieved PR (Fig. 2). The patient with the longest reported SD (>3 years) was a 61-year-old woman with stage III PTCL-NOS at diagnosis and ECOG performance status of 1. Prior systemic therapies included CHOP and oral cyclophosphamide, etoposide, and cisplatin. The only drug-related event reported was grade 3 vomiting during cycle 22, which resolved with prochlorperazine in 2 days and did not result in dose changes. Beginning at cycle 13, romidepsin was administered on an every-other-week schedule (days 1 and 15 of 28-day cycles). This patient discontinued at her request after 42 months of treatment. Upon review by the IRC, she was determined to have PD at 38 months of treatment, 4 months before she decided to discontinue. The patient with the second longest reported SD (≈ 12 months) was a 60-year-old man with stage I cutaneous $\gamma\delta$ TCL at diagnosis. Prior therapy included alemtuzumab. Possibly drug-related AEs included grade 3 pyrexia and cellulitis during cycle 6 (history of cellulitis prior to trial) and grade 4 neutropenia during cycle 12. He had a dose withheld in cycle 12 due to infection, pyrexia, and neutropenia and discontinued romidepsin due to PD after 12 months of treatment. At the latest follow-up, all patients with best response of SD had discontinued romidepsin treatment: 24 (75 %) due to PD, 5 (16 %) due to AEs, 2 (6 %) due to patient decision, and 1 (3 %) due to insufficient response.

Toxicity

Similar to what was reported for the overall population [17], the most commonly reported any grade AEs in patients with best response of SD were nausea, asthenia/fatigue, infections (all types pooled), and dysgeusia (Table 2). Nearly all patients with best response of SD experienced ≥ 1 AE (31/32 (97 %)); this included 30 (94 %) with drug-related AEs, 23 (72 %) with grade ≥ 3 AEs, and 19 (59 %) with grade ≥ 3 drug-related AEs. Neutropenia, thrombocytopenia, infections (all types pooled), and anemia were the only grade ≥ 3 AEs reported in >1 patient with best response of SD. Incidence of any grade drug-related AEs was highest during cycle 1. Patients with best response of SD to romidepsin experienced AEs throughout their treatment; though, notably, all patients with AEs reported after cycle 6 had ≥ 1 drug-related AE, and non-drug-related grade ≥ 3 AEs occurred rarely after cycle 2 (Fig. 3).

Of the 32 patients with best response of SD, 20 patients (63 %) and 6 patients (19 %) had ≥ 1 dose interruption



and/or dose reduction due to AEs, respectively. Five of 32 patients with best response of SD discontinued romidepsin due to the following AEs: ventricular extrasystoles and decreased T wave amplitude (probably drug related; cycle 1); neutropenia (drug related; cycle 3); acute angle-closure glaucoma (possibly drug related; cycle 4); pulmonary embolism, elevated C-reactive protein, and melanoma (only melanoma was possibly drug related; cycle 6); and pneumonia (not drug related; cycle 9).

Discussion

Three HDAC inhibitors have been approved by the US Food and Drug Administration for the treatment of TCL: romidepsin for patients with CTCL who have received ≥ 1 prior systemic therapy and for patients with PTCL who have received ≥ 1 prior therapy, vorinostat for cutaneous manifestations in patients with CTCL who have progressive, persistent, or recurrent disease on or following two systemic therapies, and belinostat for patients with relapsed or refractory PTCL [16, 20, 21]. In a pivotal phase 2 trial of patients with relapsed/refractory PTCL, single-agent belinostat was able to induce an ORR of 26 % (31/120 patients), including 11 % with complete response, and a DOR of 14 months. The median PFS and OS were 1.6 and 7.9 months, respectively, and common (>5 %) grade 3/4 adverse events included anemia (11 %), thrombocytopenia (7 %), dyspnea (6 %), and neutropenia (6 %) [22].

Single-agent romidepsin has been shown to lead to durable responses (median DOR >2 years [18]) in

patients with relapsed/refractory PTCL regardless of baseline demographic and disease characteristics, including age, PTCL subtype, number or types of prior therapies, and response to prior therapy [17, 18]. The majority of responses (33/130; 25 % ORR) in the pivotal study were noted at the first response assessment (during cycle 2), and all were noted within the predetermined trial length of 6 cycles [18]. Although the NCCN guidelines for relapsed/refractory PTCL consider SD as a lack of response to treatment and a trigger to switch therapy [8], the protocol for the pivotal study of romidepsin allowed for continued treatment in patients with SD at the discretion of the patient and investigator. Thirty-two of the 130 patients (25 %) who did not achieve an objective response experienced disease stabilization, with most (22/32 (69 %)) achieving SD90 (response assessed as SD during cycles 2 and 4). Prolonged disease stabilization does not appear to be a result of inadequate response assessment, as the patients with SD ≥ 6 months by IRC assessment also had best response of SD by exploratory PET endpoint.

Although only six patients (19 %) achieved disease stabilization for ≥ 6 months, outcomes in terms of PFS and OS were similar for patients achieving PR or SD90. Rates of disease control (CR/CRu + PR + SD90) were 49, 44, and 38 for patients with PTCL-NOS, AITL, and ALK-1-negative ALCL, respectively. As a result of extended treatment in many patients, the pivotal study protocol was amended to allow for maintenance dosing after ≥ 12 treatment cycles.

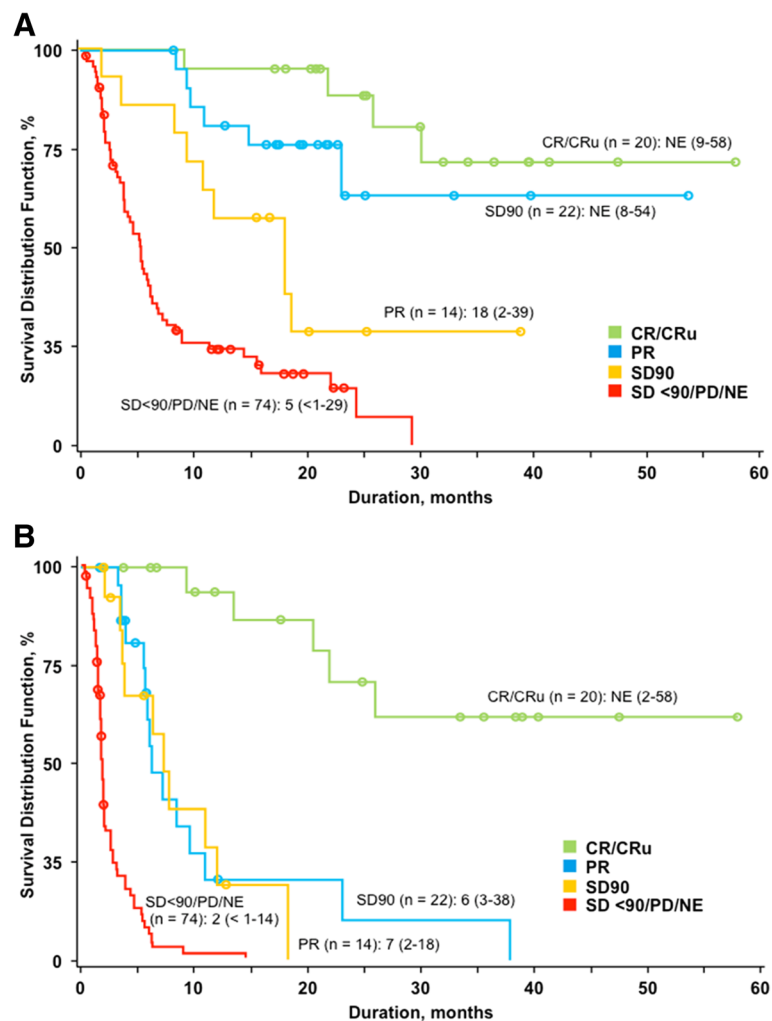


Fig. 2 Survival based on clinical IRC assessment by best response to romidepsin ($n = 130$). Progression-free survival (a) and overall survival (b). Patients with insufficient efficacy data to determine response due to early termination (NE; $n = 29$) were included as nonresponders. NE not evaluable

It was previously reported that prolonged treatment with romidepsin did not affect the safety profile, and the highest incidence of grade ≥ 3 AEs occurred during cycles 1 to 2 of treatment [18]. Additionally, most discontinuations and dose modification occurred early in treatment (cycles 1 to 2 and 2 to 3, respectively). The most common AEs reported included gastrointestinal disturbances, hematologic abnormalities, asthenic conditions, and infections (all types pooled) [16–18]. There were no clinically significant changes in QT intervals across treatment cycles, and ECG abnormalities were uncommon. A recently published ECG study of romidepsin asserted the cardiac safety of romidepsin while stressing the need for appropriate potassium and/or magnesium supplementation throughout treatment [23]. Results from a thorough post-marketing cardiac study in patients with advanced malignancies also assert that

despite the use of QT-prolonging antiemetics, romidepsin treatment did not significantly prolong QTc, even at supratherapeutic doses; reported increases in calculated QTc were exaggerated due to transient heart rate increases [24]. The AE profile for patients with best response of SD was similar to that of the overall population. Although the majority of patients with best response of SD experienced grade ≥ 3 AEs, <20 % required dose reductions and/or discontinued due to AEs. Patients with SD who received prolonged romidepsin treatment did experience AEs late in treatment, but only one patient discontinued due to AEs after cycle 6.

Conclusions

The data shown herein demonstrated the feasibility and clinical benefit of prolonged administration of romidepsin in patients who achieved at least SD on therapy.

Table 2 Most common AEs by treatment cycle in patients with best response of SD to romidepsin

Drug related/non-drug related, n	Treatment cycle							
	Any (n = 32)	1 (n = 32)	2 (n = 28)	3 (n = 25)	4 (n = 21)	5 (n = 14)	6 (n = 11)	>6 (n = 5)
Any grade AEs reported in > 20 % of patients with best response of SD								
Nausea	22/2	18/2	6/0	5/0	5/1	5/0	0/0	1/0
Asthenia/fatigue	19/1	13/0	6/0	4/0	4/0	3/1	2/1	1/0
Infections SOC	6/11	4/6	1/3	1/2	0/5	1/1	1/2	1/2
Dysgeusia	14/0	8/0	7/0	1/0	2/0	0/0	0/0	0/0
Vomiting	12/1	5/0	4/1	4/0	3/1	4/0	0/0	1/0
Diarrhea	7/5	5/1	4/2	1/0	1/0	0/1	0/1	1/0
Constipation	5/6	3/3	0/0	2/0	0/0	1/1	0/0	0/1
Anorexia	11/0	6/0	3/0	3/0	1/0	2/0	0/0	1/0
Thrombocytopenia	10/0	6/0	2/0	3/0	2/0	2/0	2/0	0/0
Pyrexia	7/1	1/1	1/0	0/1	2/1	1/1	1/1	1/1
Neutropenia	7/0	4/0	4/0	3/0	2/0	1/0	1/0	2/0
Anemia	6/1	1/1	2/0	1/0	1/0	0/0	1/0	2/0
Grade ≥ 3 AEs reported in > 1 patients with best response of SD								
Neutropenia	7/0	4/0	3/0	2/0	1/0	1/0	0/0	2/0
Thrombocytopenia	6/0	3/0	1/0	1/0	1/0	1/0	1/0	0/0
Infections SOC	2/3	1/2	0/0	0/0	0/0	0/0	1/0	0/2
Anemia	3/0	0/0	1/0	0/0	0/0	0/0	1/0	1/0

Patients who experienced drug-related events may have also experienced non-drug-related events
SOC system organ class

Durability of responses in patients with relapsed/refractory PTCL remains a challenge with current treatment options [2, 4, 14], and both response rates and survival appear to decrease with increasing lines of prior therapy [15]. Durability of both objective responses and SD as well as long-term tolerability reported with romidepsin also warrants further investigation in studies of

maintenance therapy after first-line chemotherapy or stem cell transplant in patients with PTCL.

Methods

Study design

The study design and eligibility criteria for this prospective, single-arm, open-label, international phase 2 study

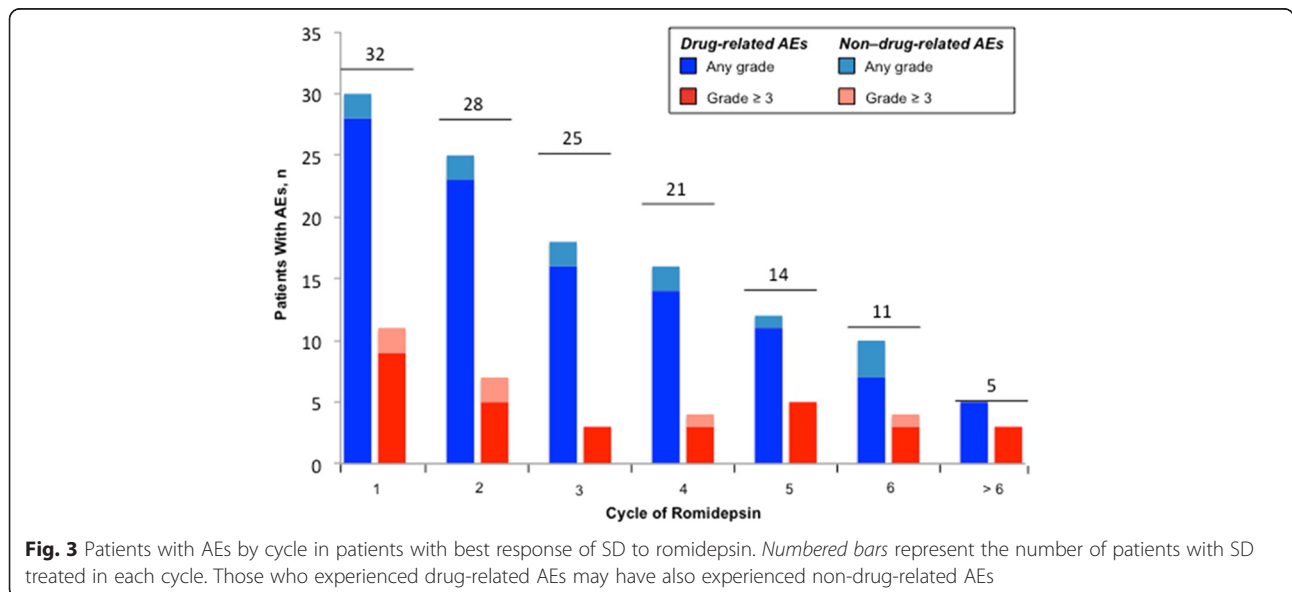


Fig. 3 Patients with AEs by cycle in patients with best response of SD to romidepsin. Numbered bars represent the number of patients with SD treated in each cycle. Those who experienced drug-related AEs may have also experienced non-drug-related AEs

were previously described (Clinicaltrials.gov identifier: NCT00426764) [17]. The following PTCL subtypes [25] were eligible: PTCL-NOS, AITL, extranodal NK/TCL nasal type, enteropathy-type TCL, subcutaneous panniculitis-like TCL, cutaneous $\gamma\delta$ TCL, hepatosplenic TCL, ALK-1-negative ALCL, ALK-1-positive ALCL (restricted to patients with disease relapse post autologous stem cell transplant), and transformed mycosis fungoides (nontransformed mycosis fungoides and Sézary syndrome excluded). Diagnosis of PTCL was histologically confirmed by local pathologists, and PTCL subtyping was reviewed by a central laboratory (Celligent Diagnostics, Charlotte, NC). Briefly, eligible patients had PTCL relapsed or refractory to ≥ 1 systemic therapy with measurable disease according to International Working Group (IWG) criteria [26] and/or measurable cutaneous disease, an Eastern Cooperative Oncology Group (ECOG) performance status of 0 to 2 at enrollment, adequate bone marrow and organ function (including no known significant cardiac abnormalities), and serum potassium and magnesium concentrations ≥ 3.8 and ≥ 0.85 mmol/L, respectively. The need for electrolyte supplementation is common for patients with TCL [23, 27], and hypokalemia and/or hypomagnesemia are known risk factors for cardiac arrhythmia and sudden cardiac death [28–31] and may be associated with electrocardiogram (ECG) abnormalities [32, 33]. Low levels of potassium and/or magnesium could be corrected by supplementation to meet the inclusion criteria throughout the trial.

Patients received romidepsin 14 mg/m² as a 4-h intravenous infusion on days 1, 8, and 15 of each 28-day cycle (Food and Drug Administration-approved dosing in both PTCL and CTCL [16]) for up to 6 cycles. Patients with at least SD could continue treatment beyond 6 cycles at the discretion of the patient and investigator. By protocol amendment, patients treated for ≥ 12 cycles could receive maintenance dosing of two rather than three doses per 28-day cycle. After cycle 24, dosing could be further reduced to once per cycle in those who has received maintenance dosing for ≥ 6 months.

The protocol, informed consent form, and other relevant study documentation were approved by the institutional review boards of all participating institutions. All patients gave written informed consent prior to study entry.

Efficacy and safety assessments

The efficacy and safety assessments conducted were previously described in detail [17]. Response was assessed every 2 cycles (during days 22–28, completed prior to treatment in next cycle) by site investigators and an independent review committee (IRC) according to the 1999 IWG criteria guidelines for response assessments

for NHL [26]. IRC assessments were primary and investigator assessments were considered supportive. The primary endpoint was rate of CR/CRu, and key secondary efficacy endpoints included ORR, DOR, and time to disease progression. Time to response as well as survival (PFS and overall survival [OS]) by best response to romidepsin at any time on trial was also assessed. The utility of positron emission tomography (PET) in this patient population was examined as a prospective exploratory endpoint, with responses assessed by IWG + PET criteria [34]. Full results for this endpoint were presented in a separate publication [35].

In the analyses herein, SD90 was defined as patients with the best response of SD with time to progression ≥ 90 days, which corresponded with a response assessment of SD during cycles 2 and 4. Adverse events (AEs) were documented according to the Medical Dictionary for Regulatory Activities (version 12.0) and the National Cancer Institute Common Terminology Criteria for Adverse Events (version 3.0). Drug-related AEs were those indicated by the investigator as having at least a possible relationship to romidepsin or missing a relationship assessment.

Statistical methods

Patients with the best response of SD were the primary focus of this analysis. All descriptive statistical analyses were performed using SAS statistical software, version 9.2 (SAS Institute). Time-to-event data were summarized by Kaplan-Meier methods. This study is ongoing, but September 30, 2012, was the cutoff date for this analysis. Patients who withdrew from the trial without PD were to be assessed every 2 months until PD, at withdrawal from follow-up, or at start of alternate therapy.

Competing interests

FF - Speakers Bureau and Clinical Trial: Celgene Corporation. SH - Research: Celgene Corporation, Millennium Pharmaceuticals Inc, Infinity, Kiowa-Kirin, Seattle Genetics, Spectrum Pharmaceuticals; Consulting and Honoraria: Amgen, Inc, Bristol-Myers Squibb Company, Celgene Corporation, Janssen Pharmaceuticals, Millennium Pharmaceuticals. BP - Honoraria: Celgene Corporation. HMP - Research Funding, Honoraria, Consulting: Celgene Corporation. LS - Consulting and Honoraria - Celgene Corporation and Spectrum Pharmaceuticals. BB and JW - Consulting and Financial Pay for Review of Article: Celgene Corporation. BC - Consulting: Celgene Corporation.

Authors' contributions

FF interpreted the data, drafted the paper, and approved all versions including the final version. SH, BP, HMP, LS, and BC interpreted the data, critically revised the paper, and approved all versions including the final version. BB and JW acquired and analyzed the data, critically revised the paper, and approved all versions including the final version.

Acknowledgements

This study was supported by the research funding from Celgene Corporation. The authors take full responsibility for the content of this manuscript but thank Stacey Rose, PhD and William Ho, PhD (MediTech Media), for providing medical editorial assistance during the preparation of this manuscript. Financial support for medical editorial assistance was provided by Celgene Corporation.

Author details

¹Yale Cancer Center, PO Box 208028, 333 Cedar St, TMP 3, New Haven, CT 06520-8028, USA. ²Memorial Sloan-Kettering Cancer Center, New York, NY, USA. ³Kimmel Cancer Center, Thomas Jefferson University, Philadelphia, PA, USA. ⁴Peter MacCallum Cancer Centre, University of Melbourne, Melbourne, Australia. ⁵Moffitt Cancer Center, Tampa, FL, USA. ⁶Veristat, LLC, Southborough, MA, USA. ⁷Hospices Civils de Lyon, Lyon, France.

Received: 30 November 2015 Accepted: 11 February 2016

Published online: 10 March 2016

References

- Foss FM, Zinzani PL, Vose JM, et al. Peripheral T-cell lymphoma. *Blood*. 2011;117:6756–67.
- Horwitz SM. Management of peripheral T-cell non-Hodgkin's lymphoma. *Curr Opin Oncol*. 2007;19:438–43.
- American Cancer Society. *Cancer Facts & Figures 2015*. 2015; 2015
- Vose J, Armitage J, Weisenburger D, International T-Cell Lymphoma Project. International peripheral T-cell and natural killer/T-cell lymphoma study: pathology findings and clinical outcomes. *J Clin Oncol*. 2008;26:4124–30.
- Savage KJ, Harris NL, Vose JM, et al. ALK- anaplastic large-cell lymphoma is clinically and immunophenotypically different from both ALK+ ALCL and peripheral T-cell lymphoma, not otherwise specified: report from the International Peripheral T-Cell Lymphoma Project. *Blood*. 2008;111:5496–504.
- A predictive model for aggressive non-Hodgkin's lymphoma. The International Non-Hodgkin's Lymphoma Prognostic Factors Project. *N Engl J Med* 1993;329:987–994. doi:10.1056/NEJM199309303291402
- Foss FM, Carson KR, Pinter-Brown L, et al. Comprehensive oncology measures for peripheral T-cell lymphoma treatment (COMPLETE): first detailed report of primary treatment. *Blood*. 2012;120:Abstract 1614.
- NCCN clinical practice guidelines in oncology: non-Hodgkin's lymphomas. V.1.2016
- Iragavarapu C, Mustafa M, Akinleye A, et al. Novel ALK inhibitors in clinical use and development. *J Hematol Oncol*. 2015;8:17-015-0122-8.
- Gambacorti-Passerini C, Horibe K, Braiteh F, et al. Safety and clinical activity of crizotinib in patients with ALK-rearranged hematologic malignancies. *Blood*. 2013;122:abstract 4342.
- Dupuis J, Morschhauser F, Ghesquieres H, et al. Combination of romidepsin with cyclophosphamide, doxorubicin, vincristine, and prednisone in previously untreated patients with peripheral T-cell lymphoma: a non-randomised, phase 1b/2 study. *Lancet Haematol*. 2015;2:e160–5.
- Fanale MA, Horwitz SM, Forero-Torres A, et al. Brentuximab vedotin in the front-line treatment of patients with CD30+ peripheral T-cell lymphomas: results of a phase I study. *J Clin Oncol*. 2014;32:3137–43.
- Johnston PB, Cashen AF, Nikolinakos PG, et al. Safe and effective treatment of patients with peripheral T-cell lymphoma (PTCL) with the novel HDAC inhibitor, Belinostat, in combination with CHOP: results of the Bel-CHOP phase 1 trial. *Blood*. 2015;126:abstract 253.
- NCCN clinical practice guidelines in oncology: non-Hodgkin's lymphoma. V. 3.2012
- Horwitz SM, Delarue R, Lunning MA, et al. Progression-free survival for subsequent relapses in patients with peripheral T-cell lymphoma (PTCL). *J Clin Oncol*. 2012;30:abstract 8063.
- ISTODAX (romidepsin) [package insert]. 2014
- Coiffier B, Pro B, Prince HM, et al. Results from a pivotal, open-label, phase II study of romidepsin in relapsed or refractory peripheral T-cell lymphoma after prior systemic therapy. *J Clin Oncol*. 2012;30:631–6.
- Coiffier B, Pro B, Prince HM, et al. Romidepsin for the treatment of relapsed/refractory peripheral T-cell lymphoma: pivotal study update demonstrates durable responses. *J Hematol Oncol*. 2014;7:11.
- Foss FM, Pro B, Prince HM, et al. Responses to romidepsin by line of therapy in patients with relapsed/refractory (R/R) peripheral T-cell lymphoma (PTCL). *J Clin Oncol*. 2014;32:abstract 8563.
- ZOLINZA (vorinostat) [package insert]. 2015.
- BELEODAQ (belinostat) [package insert]. 2014.
- O'Connor OA, Horwitz S, Masszi T, et al. Belinostat in patients with relapsed or refractory peripheral T-cell lymphoma: results of the pivotal phase II BELIEF (CLN-19) study. *J Clin Oncol*. 2015;33:2492–9.
- Noonan AM, Eisch RA, Liewehr DJ, et al. Electrocardiographic studies of romidepsin demonstrate its safety and identify a potential role for KATP channel. *Clin Cancer Res*. 2013;19:3095–104.
- Sager PT, Balsler B, Wolfson J, et al. Electrocardiographic effects of class 1 selective histone deacetylase inhibitor romidepsin. *Cancer Med*. 2015;4:1178–85.
- Rizvi MA, Evens AM, Tallman MS, et al. T-cell non-Hodgkin lymphoma. *Blood*. 2006;107:1255–64.
- Cheson BD, Horning SJ, Coiffier B, et al. Report of an international workshop to standardize response criteria for non-Hodgkin's lymphomas. NCI Sponsored International Working Group. *J Clin Oncol*. 1999;17:1244.
- Morgan M, Maloney D, Duvic M. Hypomagnesemia and hypocalcemia in mycosis fungoides: a retrospective case series. *Leuk Lymphoma*. 2002;43:1297–302.
- Peacock JM, Ohira T, Post W, et al. Serum magnesium and risk of sudden cardiac death in the Atherosclerosis Risk in Communities (ARIC) study. *Am Heart J*. 2010;160:464–70.
- Del Gobbo LC, Imamura F, Wu JH, et al. Circulating and dietary magnesium and risk of cardiovascular disease: a systematic review and meta-analysis of prospective studies. *Am J Clin Nutr*. 2013;98:160–73.
- Santoro A, Mancini E, London G, et al. Patients with complex arrhythmias during and after haemodialysis suffer from different regimens of potassium removal. *Nephrol Dial Transplant*. 2008;23:1415–21.
- Osadchii OE. Mechanisms of hypokalemia-induced ventricular arrhythmogenicity. *Fundam Clin Pharmacol*. 2010;24:547–59.
- El-Sherif N, Turitto G. Electrolyte disorders and arrhythmogenesis. *Cardiol J*. 2011;18:233–45.
- Piekarz RL, Frye AR, Wright JJ, et al. Cardiac studies in patients treated with depsipeptide, FK228, in a phase II trial for T-cell lymphoma. *Clin Cancer Res*. 2006;12:3762–73.
- Juweid ME, Wiseman GA, Vose JM, et al. Response assessment of aggressive non-Hodgkin's lymphoma by integrated International Workshop Criteria and fluorine-18-fluorodeoxyglucose positron emission tomography. *J Clin Oncol*. 2005;23:4652–61.
- Horwitz S, Coiffier B, Foss F, et al. Utility of 18fluoro-deoxyglucose positron emission tomography for prognosis and response assessments in a phase 2 study of romidepsin in patients with relapsed or refractory peripheral T-cell lymphoma. *Ann Oncol*. 2015;26:774–9.

Submit your next manuscript to BioMed Central and we will help you at every step:

- We accept pre-submission inquiries
- Our selector tool helps you to find the most relevant journal
- We provide round the clock customer support
- Convenient online submission
- Thorough peer review
- Inclusion in PubMed and all major indexing services
- Maximum visibility for your research

Submit your manuscript at
www.biomedcentral.com/submit

