

ERRATUM

Open Access



# Erratum to: Interim analysis of survival in a prospective, multi-center registry cohort of cutaneous melanoma tested with a prognostic 31-gene expression profile test

Eddy C. Hsueh<sup>1</sup>, James R. DeBloom<sup>2</sup>, Jonathan Lee<sup>3</sup>, Jeffrey J. Sussman<sup>4</sup>, Kyle R. Covington<sup>5</sup>, Brooke Middlebrook<sup>5</sup>, Clare Johnson<sup>5</sup>, Robert W. Cook<sup>5\*</sup>, Craig L. Slingluff Jr<sup>6</sup> and Kelly M. McMasters<sup>7</sup>

## Erratum

The original article [1] contained an error in Fig. 1 mistakenly carried forward by the Production team handling this article whereby the values denoting the 95% Confidence Intervals in the uppermost table had been omitted.

This error has now been corrected and the values returned.

## Author details

<sup>1</sup>Department of Surgery, St. Louis University, St. Louis, MO, USA. <sup>2</sup>South Carolina Skin Cancer Center, Greenville, SC, USA. <sup>3</sup>Northside Melanoma and Sarcoma Specialists of Georgia, Atlanta, GA, USA. <sup>4</sup>Department of Surgery, University of Cincinnati Cancer Institute, Cincinnati, OH, USA. <sup>5</sup>Castle Biosciences, Inc., 820 S. Friendswood Drive Suite 201, Friendswood, TX, USA. <sup>6</sup>Department of Surgery and Cancer Center, University of Virginia School of Medicine, Charlottesville, VA, USA. <sup>7</sup>Department of Surgical Oncology, James Graham Brown Cancer Center, University of Louisville School of Medicine, Louisville, KY, USA.

Received: 14 September 2017 Accepted: 14 September 2017

Published online: 05 October 2017

## Reference

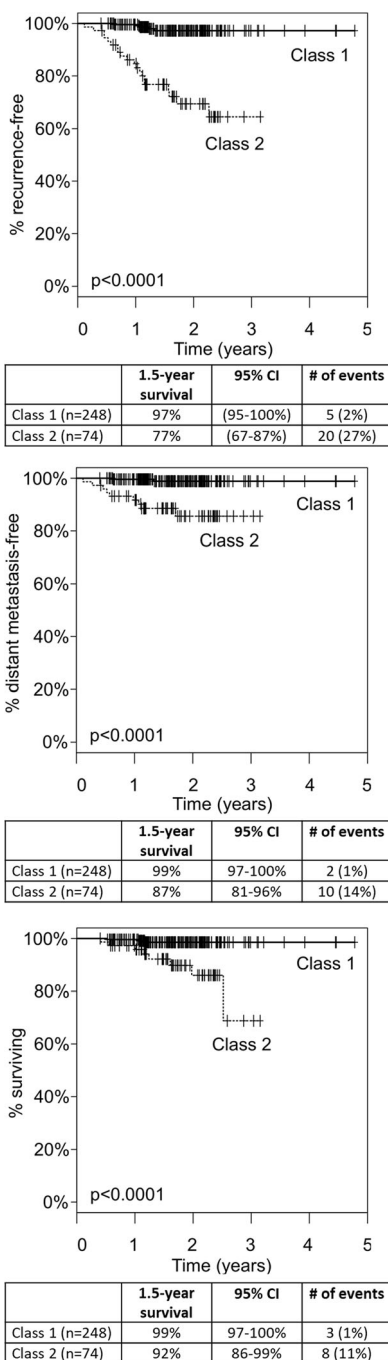
1. Hsueh EC, et al. Interim analysis of survival in a prospective, multi-center registry cohort of cutaneous melanoma tested with a prognostic 31-gene expression profile test. *J Hematol Oncol.* 2017;10:152.

\* Correspondence: rcook@castlebiosciences.com

<sup>5</sup>Castle Biosciences, Inc., 820 S. Friendswood Drive Suite 201, Friendswood, TX, USA

Full list of author information is available at the end of the article





**Fig. 1** Kaplan-Meier analysis of RFS (top), DMFS (middle), and OS (bottom) by GEP class. Significant separation of class 1 and class 2 risk ( $p < 0.0001$ ) is observed for each endpoint. Solid line: class 1; dashed line: 2